

# AIR YORKSHIRE



Aviation Society

Volume 49 · Issue 7

July 2023



SP-RZD  
Boeing 737-8-200 MAX  
Ryanair (Buzz)  
26 May 2023  
Matt Barker

[www.airyorkshire.org.uk](http://www.airyorkshire.org.uk)

# Monthly meetings/presentations....

The Media Centre, Leeds Bradford Airport (Sunday 2.30pm)

|                           |   |
|---------------------------|---|
| 06 August 2023            | Stuart Reid - 'SEPECAT Jaguar - The Trainer That Never Was'. I will cover the origin of the aircraft through its design and development and its use in RAF service. |
| 03 September 2023         | Eddie McCallum – “Flying a microlight from UK to USA and back, the trials and tribulations therein”   |
| 01 October 2023           | Lloyd Robinson - The UK historic aircraft register  |
| 05 November 2023<br>@ 3pm | Annual A.G.M. with refreshments at the at Multiflight cafe  |
| 03 December 2023<br>@ 3pm | Christmas Party at the Multiflight cafe   |

## Society news....

Attendance at the monthly meetings is slowly improving. Our guest speakers get a good impression of Air Yorkshire and Yorkshire hospitality with a full attendance and we thank those members who turn out to help with that. **Jim Stanfield**

Whilst we are able to utilise the media centre at the airport, every now and again a spanner is thrown in the works. This time it's the plan by the airport to refurbish some of their offices so decamping inmates to the centre and making it unavailable for us, so.... August meeting (Stuart Reid - SEPECAT Jaguar) will still be at the media centre, and we may have bottomed out the problem with the parking tokens in that some zealous person is putting them back in the machine before we need them !!

We are looking at alternatives for SEP & OCT and currently favour the factory club in Guiseley but we need to confirm. November (AGM) will be held at the Multiflight café at 3pm and will be followed by a complimentary afternoon tea The December meeting will be at the Multiflight Cafe as in previous years.

PLUS .. many thanks to Mike Storey who has doggedly pursued Multiflight to arrange a second visit. SO far we have allocated Saturday Sep 9<sup>th</sup> and places are filling up fast. If you want to go on this visit email me and I'll add you to the list. We are limited to 15 persons so first come first served and favour those that have not been before.

We are trying to get other visits but they are proving very difficult to arrange, it doesn't help when idiots abuse rules and even arson attacks on hangars, if you see anything suspicious please let the relevant authorities know about it. **Howard Griffin**

# Yorkshire European Bandeirante....

Andy Wood

Seeing the LBA Remember When... in the latest magazine, and the photo of the Bandeirante brought back memories of the day it performed an approach and overshoot, at the Willy Howe Farm airstrip in East Yorkshire, in its Yorkshire European days. I think that this was in May 1993 ? I believe it was a pleasure flight out of LBA, maybe some Air Yorkshire members were on board. Attached are a couple of photos i took on the day, that may be of interest.



### LAA GRASS ROOTS FLY-IN POPHAM September 2022

This year, there was no annual fly in at Sywell due , we are told to the financial terms for use of the airfield being unacceptable. Instead we had a smaller gathering at Popham which turned out to be not quite the success expected due again to the weather but also the limited aircraft parking available on the airfield. 350 aircraft visited during the 3 days but Sunday was really a waste as only 20 made it. The stall holders had major problems with their electronic payment systems as the mobile phone network at Popham is almost non-existent. Still, some very intriguing and colourful aircraft visited with a handful of foreign participants.

A few photos are attached below, but it is nice to be able to wander at will around the aircraft and to inspect cockpits etc.. The entrance to the main aircraft parking area from the taxiway was very small, allowing one way aircraft traffic and I'm sure was a safety hazard for pedestrians as you had to go through the narrow bit to get to the other flight lines. None of the hangars were open but some aircraft were outside anyway, and I didn't need many of the residents having been allowed to 'wander' the hangars earlier in the year.

What of this coming year? Well, it seems the LAA are sticking with September but as yet at an unidentified location. I cant see them using Popham again but personally I'd like to see a return to Sywell or Cranfield. An annual rally on the scale of Sywell requires exclusive use of the airfield plus additional days to set up and break down. They cost about £100K to run and are reliant on many volunteers. In fact the Popham event cost in the region of £50K. So here's hoping they find a suitable location soon so we can plan to be there!



G-PAFF ROTOSPSPORT MTO name 'Big Nellie' pays homage to Wallis WA-116 Agile 'Little Nellie' that starred in 1967 James Bond Film you only live twice



Newly restored DH82C Tiger Moth G-FCTK



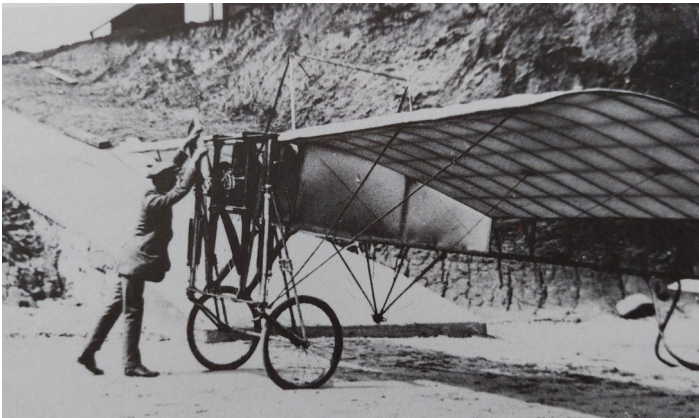
Z1R Stmmelfitzer G-ZIRA

FILEY SANDS AERODROME by Steve Langfield, with thanks to Ces Mowthorpe.

In April 1910 an application was made to Filey UDC by Mr JWF Tranmer, a Scarborough resident, to use part of the beach as a base for aircraft take offs and landings - it was successful. The area in question afforded 4 miles of clear level sand and was a mile or so to the south of Filey called Primrose Valley, where the Haven Holiday Park now stands. Land was also purchased from the owner, the estate of the Lord of Hunmanby Manor, to site a wooden hangar, sufficient to house two aircraft, together with a bungalow on the shallow cliffs overlooking the beach. This area was known as Low Cliffs or Level Cliffs. In addition a 12 ft wide concrete slipway, some 180ft in length was built to take the aircraft up and down to the Sands by means of a winch. Incidentally this was demolished by troops in 1940 as an anti invasion measure. On receiving permission to use the Sands the Northern Aerial Transport Co. Ltd was formed to operate a flying school.

### JOHN WILLIAM HOUSE

The site was officially opened on 25/7/10. House had already arrived in Filey by rail on 22nd July, the same date as part of his monoplane he called 'La Blonde', the rest followed shortly after. By the time the Bleriot was assembled in the hangar it had been exhibited in Bradford, at Halifax Zoo and flown from Rawdon Meadows Airfield. By the time House arrived in Filey he could be regarded by the standards of the day as a seasoned aviator. He had a busy few weeks ahead as his arrival coincided with his marriage on 30/7/10, the couple were to spend their honeymoon in Filey and from here he would be able to fly his Bleriot. House made a flight from the beach on 13/8/10. At the end of the first flight that day he turned his aircraft round on the beach to ready it for a second flight but the propeller caught a sand castle, the nose dropped and the aircraft flipped over badly damaging the right wing. A fuel leak occurred and House was soaked in petrol though he had managed to stop the engine. It was some time before locals managed to extricate him but he was relatively unharmed. The damaged Bleriot was dragged up the slipway and into the hangar where it was repaired within a week. It was again damaged on 20/8/10, House's third crash within six months, though this time it was not repaired but put up for sale by mid September. House was to stay in Filey in all for some six months.



John William House with the Bleriot of the Northern Aero Syndicate in August 1910 on the beach at Filey. The ramp to the hangar above the cliffs is behind the aircraft

## THE EARLY BLACKBURN AIRCRAFT AND BENTFIELD 'BENNY' C HUCKS

Tranmer's Flying School enterprise was not successful. The Flight magazine issue of 22nd October 1910 advertised the hangar and bungalow for rent and Robert Blackburn took them both on at a rent of 50p each per week. He saw the potential Filey Sands could offer and his initial reason for renting was to assemble and fly his second design known as the Light Type Monoplane, his first design had been the Heavy Type Monoplane. His early machines were made in his workshop in Benson Street near Leeds City centre.

The next pilot of note at Filey was Bentfield Hucks. He was regarded as an aviation innovator and was well known at Hendon, then the seat of British civil aviation, where he worked for Grahame-White. He became Blackburn's first test pilot at Filey and was well paid at £3 per week even though he had not formally qualified as a pilot. It was, however, not unusual at this time for pilots to be unqualified and he had taught himself to fly. The Blackburn Light Monoplane had been built to attend the Blackpool Flying Meeting held over July-August 1910 and whilst it did appear at the Meeting it had not been completed and was unable to take part in the flying. Shortly after the Meeting its flimsy undercarriage was strengthened and it was moved to Filey where it was to be tested by Hucks. On 8th March 1911 it was a clear, calm day and Hucks, after taxiing to familiarise himself with the new aircraft, took off heading north to Filey Brigg on its first flight. He attempted a sharp turn but the plane side slipped, a wing tip caught the sand and the aircraft crashed. Hucks was lucky to walk away unhurt. After rebuilding the Blackburn it became a reliable machine and one of the best of Blackburn's early designs. In all eight of these monoplanes were made in three distinctive types.



The Blackburn Light Monoplane at the Olympia Aero Show

The Light Monoplane was displayed at the Olympia Aero Show held in March 1911, it was offered for sale at £825 complete (£80,000 today) but it did not sell. After the show it was moved back to Filey and on 17th May Hucks flew it to Scarborough and back in 19 minutes at an average speed of 50 mph, reaching 1200ft, almost an altitude world record for that time. The following day he was taking the final test to obtain his Aviation Certificate, this involved a figure of 8 manoeuvre. Unfortunately the airscrew sheared off the aircraft, Hucks was only slightly hurt in the resulting forced landing though the aircraft was again damaged. Despite the crash he still passed the test and he was awarded the Royal Aero Club Aviator's Certificate number

91. The Blackburn was rebuilt and with a second Monoplane the site became the base for the Blackburn School of Flying, eventually a third machine was added. It may seem odd today but many early training aircraft were single seaters. By this time the two Bleriot had left Filey Aerodrome.



An evocative picture of a Blackburn Monoplane on Filey Sands

Hucks continued as CFI at Filey and taught pupils to learn how to fly though he remained the only pilot to obtain his Aero Club Certificate here. He made a number of notable flights, one a night flight from Filey to Bridlington, Scarborough and back to Filey. He flew the last 10 miles with a faltering engine but landed safely around 10pm with the aid of bonfires lit on the beach. Hucks was to leave Filey in August 1911 after his brief stay and went on to become the first Englishman to fly inverted and to perform a loop in an aircraft. There is a local legend that the loop was over Filey Railway Station but it was in fact at Hendon on 15th November 1913. He is also known as the inventor of the Hucks starter during his time at Hendon whilst serving in the RFC during the Great War.

### **HUBERT OXLEY**

With the departure of Hucks from Filey the vacant position of CFI was taken over on 3/9/11 by Hubert Oxley from Heckmondwike. He had learned to fly at Brooklands and only gained his Aviator's Certificate on 9th May that same year. The first innovation in his new position was to turn the front passenger seat of the Mercury 1 around so that it now faced backwards towards the instructor. This was so the pupil could visually observe the pilot's control movements during early flying training. The first Blackburn Mercury 111 made it's first flight from Filey Sands on 9/11/11 with Oxley at the controls and it went on to make more flights including some at night. When a prize of £50, over £4700 today, was offered for the first flight from the coast to Leeds, Oxley entered in a 2 seat Blackburn Mercury 111. His passenger was Robert Weiss from Dewsbury who at the time owned a Blackburn built Bleriot. Oxley and Weiss took off on the morning of 6/12/11 and started the flight with a steep dive over Filey beach. The fabric tore off the wings which collapsed under the strain. Oxley died immediately from a broken neck when he was thrown out of the plane, he was 25. The passenger, Weiss, died of his injuries 90 minutes after the crash, he was 29. Both occupants and the wreckage were taken to an outbuilding of the Three Tuns Hotel in the town where they were impounded pending an inquiry and also to keep souvenir hunters at bay. The Air Accident report published on 6/12/11 stated



that whilst the top speed of the Mercury was 75mph it was estimated that Oxley had reached over 150mph in this dive and it was far deeper than was safe. As making steep dives was one of Oxley's habits it was deemed likely that over time this had weakened the aircraft's structure.



Hubert Oxley with a passenger in the Blackburn Monoplane in which he crashed on Filey Beach on 6/12/11, killing himself and Robert Weiss.  
The Blackburn hangar is to the left

### **JACK BREARLEY**

The next CFI for Blackburns after Oxley was to be Jack Brearley, a position he held only till September of 1912. Blackburn moved his School of Flying to Hendon which was being regarded as the centre of flying in the country and Blackburn hoped it would help gain his company some military contracts.

### **THE END OF FLYING AT FILEY**

Blackburn had the foresight to see the potential of flying from Filey and flew his early designs here though, with his move to Hendon at the end of 1912, flying came to an end. In its two year operation some ground breaking aeronautical work had taken place. Filey Sands had become a popular flying centre during its brief life and there were even pleasure flights taking place. The original hangar remained on site and was used as storage by the military battalions engaged in coastal defence duties until 1921. It was purchased by Frederick Parker an engineer and it was dismantled and moved to a new location nearby in Hunmanby. The intention was that it would house his four traction engines and threshing machines but there proved to be insufficient headroom to house the latter. The structure survived and its future was secured by the 'Filey Bay Initiative' when it raised enough funds to move the hangar to Elvington in 2011 where it stands today.



## The information board looking over the Sands where the early flights took place

On 4th June 2011, 100 years after flying from the beach commenced, a public information board about the Blackburn Flying School was unveiled, appropriately, by the two daughters of Robert Blackburn. It can be seen at the southern end of the new Filey Sea Wall, overlooking the beach where the early flights took place. A faithful replica of the Blackburn Mercury II is on display at the Yorkshire Air Museum, regarded by many as the first successful all British aeroplane. It had been made for the Yorkshire TV Edwardian programme Flambards, first broadcast in 1979.



The replica Blackburn Monoplane at Elvington

## June 2023

| Airline         | Date   | Reg     | Type                  | MSN        | Remarks  |
|-----------------|--------|---------|-----------------------|------------|--|
| CargoLogicAir   | 01 Jun | (GCLBA) | Boeing B744-428F (ER) | 32870/1344 | WFU 09 Mar 22<br>Chicago - Hahn 10 Mar 22 Strd<br>Regd to ? as N----- 31 May 23  |
| Ryanair         | 01 Jun | EIIHA   | Boeing B38M MAX 8-200 | 67081/8615 | Dlvd DUB 01 Jun 23   |
| BA Euroflyer    | 03 Jun | GPOWT   | Airbus A21N-271NX     | 8830       | Lsd fm Titan Airways<br>04 Jun 23 - ? Bsd LGW  |
| BA Euroflyer    | 04 Jun | GGATN   | Airbus A320-232       | 1613       | Regd 31 May 23<br>Trans fm British Airways   |
| Eastern Airways | 04 Jun | GMAJT   | BAe Jetstream 41      | 040        | WFU 07 Apr 23<br>ABZ - HUY 09 Apr 23 Strd<br>CoA expired 26 May 23   |
| TUI Airways     | 04 Jun | LYUNO   | Boeing B738-8FE-W     | 33801/1504 | Lsd fm Getjet Airlines<br>03 Jun 23 - ? Bsd BHX  |
| Eastern Airways | 06 Jun | LYCHF   | Boeing B733-31S       | 29057/2942 | Lsd fm KlasJet<br>04 Jun 23 - ?<br>Ops NQY - LGW - NQY   |
| easyJet UK      | 06 Jun | GEZGJ   | Airbus A319-111       | 4705       | Regd 11 May 11<br>Trans to easyJet Swiss as HBJYK<br>08 Jan 16<br>Re-regd 05 Jun 23  |
| British Airways | 07 Jun | OOAB-   | Airbus A339-900       |            | Lsd fm Air Belgium<br>01 Jul 23 - Nov 23<br>Bsd LHR  |
| Ryanair         | 07 Jun | EIIHO   | Boeing B38M MAX 8-200 | 67088/8662 | Dlvd DUB 07 Jun 23   |
| easyJet UK      | 08 Jun | GUZLO   | Airbus A20N-251N      | 11530      | Dlvd LGW 08 Jun 23   |
| Loganair        | 08 Jun | (GLGNH) | SAAB 340-B            | 333        | WFU 27 May 23<br>GLA - Orebro 02 Jun 23<br>Regd to Jetstream Aviation Capital<br>07 Jun 23 as N-----<br>Fr Frt conv              |
| Ryanair         | 08 Jun | EIIHP   | Boeing B38M MAX 8-200 | / 8665     | Dlvd DUB 08 Jun 23   |
| easyJet UK      | 09 Jun | GEZAX   | Airbus A319-111       | 2818       | WFU 08 Jan 23<br>LGW - QLA 09 Jan 23<br>MX/Strd<br>QLA - LGW 09 Jun 23<br>To rtn to svc 10 Jun 23<br>(GEZAU to follow 15 Jun 23) |
| British Airways | 10 Jun | GXWBN   | Airbus A350-          | 609        | Regd 09 Jun 23   |

|                    |        |             |                                    |                |   |
|--------------------|--------|-------------|------------------------------------|----------------|---|
|                    |        |             | 1041                               |                | Dlvd LHR 10 Jun 23  |
| Ryanair            | 10 Jun | EIIHR       | Boeing B38M<br>MAX 8-200           | 62360/<br>8669 | Dlvd DUB 10 Jun 23  |
| Eastern<br>Airways | 12 Jun | (GCMLI)     | Embraer ERJ<br>170-100LR           | 170000<br>93   | Ljubljana – Franczal 20 Feb (Paint)<br>Franczal - Ljubljana 14 Mar 23<br>Ljubljana - HUY as OELOC 12 Jun<br>23  |
| Ryanair            | 13 Jun | EIIHK       | Boeing B38M<br>MAX 8-200           | 62358/<br>8627 | Dlvd DUB 13 Jun 23  |
| DHL Air            | 15 Jun | GDHLP       | Boeing B767-<br>316 (ER)<br>(BDSF) | 41996/<br>1052 | Roswell - Bangor as N6388 09 Jun<br>23<br>Bangor - EMA 10 Jun 23<br>Regd 14 Jun 23  |
| Ryanair            | 15 Jun | EIIHE       | Boeing B38M<br>MAX 8-200           | 67084/<br>8632 | Dlvd SNN 15 Jun 23  |
| easyJet UK         | 16 Jun | GECJD       | Airbus A320-<br>214                | 3945           | Regd 15 Jun 23<br>Trans fm easyJet Europe   |
| TUI Airways        | 16 Jun | (GTAWR<br>) | Boeing B738-<br>8K5-SW             | 37256/<br>4416 | WFU 23 Feb 23<br>MAN - SNN 24 Feb 23<br>Regd to Sun Country as N851SY   |
| Aer Lingus         | 17 Jun | ECHDS       | Boeing B757-<br>256                | 26252/<br>900  | Lsd fm Privilege Style<br>17 Jun 23 - 20 Jun 23<br>Bsd DUB  |
| TUI Airways        | 19 Jun | ECMUA       | Boeing B777-<br>212 (ER)           | 28524/<br>350  | Lsd fm Privilege Style<br>17 Jun 23 - 19 Jun 23<br>Bsd MAN  |
| Eastern<br>Airways | 21 Jun | GCMPI       | Embraer ERJ<br>170-100LR           | 170000<br>29   | Warsaw - NWI as SPLDE 14 Jun 23<br>Regd 19 Jun 23   |
| Eastern<br>Airways | 21 Jun | GCMLI       | Embraer ERJ<br>170-100LR           | 170000<br>93   | Ljubljana – Franczal 20 Feb (Paint)<br>Franczal - Ljubljana 14 Mar 23<br>Ljubljana - HUY as OELOC 12 Jun<br>23<br>Regd 19 Jun 23                        |
| easyJet UK         | 21 Jun | GEJCH       | Airbus A320-<br>214                | 4316           | Malpensa - LPL 18 Jun 23<br>Regd 20 Jun 23. Ex OEIZB<br>Trans fm easyJet Europe   |
| DHL Air            | 22 Jun | (GDHLC)     | Boeing B767-<br>323F-W             | 29606/<br>752  | WFU 10 Jun 23<br>EMA - Bahrain 11 Jun 23<br>Regd to DHL International as A9C---<br>21 Jun 23  |
| Titan Airways      | 22 Jun | (GNIKO)     | Airbus A321-<br>211-P2F            | 1250           | Regd to Titan Airways 30 Mar 21<br>Dlvd STN 01 Apr 21<br>WFU 23 Dec 22<br>Cologne - STN 24 Dec 22<br>STN - QLA 06 Jan 23<br>Strd<br>QLA - STN 31 May 23 |

|                |        |         |                          |            |  |
|----------------|--------|---------|--------------------------|------------|--|
|                |        |         |                          |            | STN - MLA 14 Jun 23<br>Trans to Titan Airways Malta as<br>9HZTC 21 Jun 23  |
| Aer Lingus     | 23 Jun | ECHDS   | Boeing B757-256          | 26252/900  | Lsd fm Privilege Style<br>23 Jun 23 - ?<br>Bsd DUB   |
| European Cargo | 23 Jun | (GECLM) | Airbus A340-642          | 622        | Acquired. Ex 9HEAL<br>Currently at BOH   |
| Ryanair        | 23 Jun | EI/9H   | Boeing B38M<br>MAX 8-200 |            | On order listing updated   |
| TUI Airways    | 23 Jun | ECMUA   | Boeing B777-212 (ER)     | 28524/350  | Lsd fm Privilege Style<br>23 Jun 23 - 25 Jun 23<br>Bsd LGW   |
| Wizz Air UK    | 23 Jun | GPOWT   | Airbus A21N-251NX        | 8830       | Lsd fm Titan Airways<br>22 Jun 23 - 24 Jun 23<br>Bsd LTN   |
| Ryanair        | 24 Jun | EIIHS   | Boeing B38M<br>MAX 8-200 | 62362/8671 | DIvd DUB 24 Jun 23   |
| Ryanair        | 24 Jun | EIIHB   | Boeing B38M<br>MAX 8-200 | 67082/8620 | DIvd SNN 24 Jun 23   |
| Jet2           | 27 Jun | GSUNC   | Airbus A21N-251NX        | 11489      | DIvd MAN 27 Jun 23   |
| Loganair       | 27 Jun | (GLMTI) | ATR 72-600               | 1160       | Clan Inglis<br>Acquired. Ex MABPK (HK5041)<br>Currently at Rodez/Albi  |
| Loganair       | 27 Jun | (GLMTH) | ATR 72-600               | 1142       | Clan Houston<br>Acquired. Ex MABPL (HK5000)<br>Currently at Rodez/Albi   |
| Ryanair        | 27 Jun | EIIHM   | Boeing B38M<br>MAX 8-200 | 62359/8649 | DIvd DUB 27 Jun 23   |
| Ryanair        | 27 Jun | EIIHF   | Boeing B38M<br>MAX 8-200 | 62357/8641 | DIvd DUB 27 Jun 23   |
| easyJet UK     | 28 Jun | GEJCF   | Airbus A320-214          | 3995       | Malpensa - LPL 18 Jun 23<br>Regd 20 Jun 23. Ex OEIZT<br>Trans fm easyJet Europe  |
| Loganair       | 29 Jun | GLMTB   | ATR 72-600               | 1096       | Mexico City - Monchengladbach as<br>XAMKH 20 Jan 23 - 12 Feb 23 MX<br>Regd to Abelo as 2AMKH -- Mar 23<br>Monchengladbach - EXT 09 Jun 23<br>(Paint)<br>EXT - ABZ as 2AMKH 27 Jun 23<br>Regd 28 Jun 23 |
| Ryanair        | 29 Jun | EIIHT   | Boeing B38M<br>MAX 8-200 | 62365/8675 | DIvd DUB 29 Jun 23   |
| BA Euroflyer   | 30 Jun | (GEUXC) | Airbus A321-231          | 2305       | LHR - LGW 25 Jun 23<br>Pending trans fm BA<br>I/S 29 Jun 23  |

## LEEDS/BRADFORD NEWS

We commence this month's section with two pieces of positive news

KLM have announced from the 28th August they will add a 4th daily service to their LBA to Amsterdam programme. The flight arrives from Amsterdam at 12:50 and departs back at 13:20. Services operate Monday to Friday, and use Embraer ERJ-175's

Sun Express, a Turkish Airline, owned jointly between Turkish Airlines and Lufthansa have announced they are to commence services to Antalya from 31st March 2024. The service will commence on a twice weekly basis on Wednesdays and Sundays, then at the end May 2024 a 3rd weekly service will be added on Fridays. The Wednesday and Sunday service arrives at 11:15 and departs at 12:15 back to Antalya. The Friday service which starts on May 24 arrives at 16:00 and departs at 17:00

## AIRPORT NEWS

Doncaster Sheffield Airport taxpayers have been told that millions of pounds could be spent on a bid to reopen re open Airport but the overall cost of a takeover remains unclear. Doncaster Council is in talks with owners The Peel Group, after it was offered a lease in April but said the terms were "not acceptable". But the council is also considering plans to acquire the site, without the owner's consent. Around £3.1m is being spent on drawing up a business case for running Doncaster Sheffield Airport and an assessment that will be used to decide whether compulsory purchase is necessary. And, by applying for a compulsory purchase order (CPO). However, the council said it would need millions of pounds to apply for the order and then contest it at a public inquiry if The Peel Group objects. South Yorkshire Mayoral Combined Authority, which is being asked to provide £6.2m for the compulsory purchase bid, said even if the order was granted by a planning inspector it was not clear how much it would cost the council to buy the airport and run it. But in a report, it also states the airport was key to the local economy, contributing around £108m a year and employing about 800. The report says: "The full costs of a compulsory purchase order are not yet known and the report recognises that more funding may be required." Further related costs could be incurred in the event of a successful compulsory purchase."

Doncaster Council is urging the Civil Aviation Authority to maintain the controlled airspace around the airport, as that allows commercial flights to operate with air-traffic control. The Peel Group closed the airport in November, claiming it had never made a profit due to a lack of passengers, despite more than £250m of investment. The passenger shortage was exacerbated by Wizz Air UK's decision to stop running flights and the Covid-19 pandemic. Doncaster Sheffield Airport handled record 1.4m passengers in the last pre-pandemic year, 2019, but just 403,869 passengers used it in the 12 months ending in March 2022. It also recorded an operating loss of £4.3m in that financial year. South Yorkshire Mayor Oliver Coppard, who runs South Yorkshire Mayoral Combined Authority, had urged the company to keep the airport open and set up meetings with investors interested in a takeover but no deal was reached.

Manchester Airport has revealed this week that EGYPTAIR will be returning with flights to Cairo for the first time since 2015. Services will operate on a five times per-week basis, being on Tuesdays, Thursdays, Fridays, Saturdays, and Sundays. The equipment of choice from the carrier for these services will be the Boeing 737-800. Services will commence on 15th July.

The parent company of Southend Airport's parent company, Esken, has confirmed that it is putting the airport up for sale. The company had originally announced in March 2023 that it was

exploring the sale of the airport. Esken is a British infrastructure company that owns and operates a number of assets, including Southend Airport, Carlisle Lake District Airport, and the Stobart Rail freight business. Esken originally bought Southend Airport on December 5, 2008, through its subsidiary Stobart Airports Ltd. The deal was worth £21 million. At the time, the book value of London Southend Airport's assets was £25.5 million, and the acquisition was later described as a "bargain purchase" by the Stobart Group. Last year, the £50 million borrowing was made to keep the airport complex afloat, with major carriers Ryanair and Wizzair suspending their operations, leaving only the return of easyJet as a major carrier. In 2022, the airport saw just 90,000 roundtrip commercial passengers, according to the UK Civil Aviation Authority. That was just 4.4% of the two million it had in 2019 when it was the UK's 18th busiest airport. In 2022, the airport only had four summer-seasonal offerings by easyJet, including returning Amsterdam, previously Southend's most popular route.

## **AIRLINE NEWS**

Global Airlines, is a new start up U.K. based airline that has reportedly in negotiations to purchase four Airbus A.380's, but has already purchased one. The company states they plan to commence services in the spring of 2024, operating trans-atlantic flights from Gatwick, initially to New York and Los Angeles. The A.380's have been purchased from Doric Aviation, a German aviation finance company which owns 14 A.380's. The person behind Global is called James Asquith who formed Holiday Swop, and is in the Guinness Book of Records as the youngest person to visit every country in the world. Thinking out of the box, he wants to continue innovating with his new carrier. In the past, there have been talks of the company introducing a "gamer class" along with business, premium, and economy. The initiative would see passengers pay a premium to play PlayStation and Xbox consoles on board, playing against fellow passengers. The airline is making some good appointments too, they recently appointed former director of the UK's Civil Aviation Authority, Richard Stephenson OBE as their chief commercial officer. It is hard to think Mr Stephenson would take on that role unless there was some credibility to all this. When they acquired their first A380, James Asquith, CEO and Founder of Global Airlines, said "Our aspiration is to be the best way to fly, and the A380, with its unmatched levels of space, comfort, and service, will be absolutely central to achieving that vision. The purchase of our first aircraft demonstrates that we are well on the way to launching Global." "The next step is to overhaul and refit the aircraft to our high specification, providing our customers with the best experience in the sky today. Acquiring our aircraft rather than leasing showcases our commitment to financial security and resilience from day one."

Loganair has taken another step to increasing its global connectivity with an interline deal with Aer Lingus. The deal will see it open up transatlantic routes to its customers via Manchester and Dublin with the Ireland's premier airline. Passengers from Aberdeen and Inverness for example can fly direct to the US via Dublin on one ticket and all baggage transfers taken care of and the added bonus of being able to clear US customs in Dublin so arriving into the US as a domestic passenger. Similarly Isle of Man and Newquay passengers can go via Manchester although there is no facility to pre-clear customs there as of yet

Virgin Orbit is closing down months after the company's first launch ended in failure. The idea of Virgin Orbit was to use a rocket launched from a Boeing 747 to deliver small satellites into orbit but the launch ended in disappointment when the first rocket failed to reach orbit. All the assets of the company including the launchers and Cosmic Girl, the ex Virgin Atlantic Boeing 747-400 were put up for sale and sold to 4 different bidders for a total of £29 million. A company called "Rocket Lab" bought the manufacturing facilities. In a statement about the closure the Richard Branson said "Virgin Orbit's legacy in the space industry will forever be remembered."

## **AIRCRAFT NEWS**

Airbus secured their largest ever order when on the 1st day of the Paris Air Show, when Indian low cost carrier IndiGo announced its purchase of 500 A.320NEO range of aircraft. The airline is already a major Airbus customer, having secured orders for 830 A320 family aircraft over the years. Indeed, IndiGo still has approximately 500 of those outstanding orders waiting to be delivered. With today's order added on, the order book for this ambitious carrier has ballooned to a four-figure total - 1,330 aircraft in all. Delivery from the latest order is not expected to commence until 2030, due to production queue delays. No full details are available of the split of the order, but IndiGo has stated the order is for a mix of A.320NEO, A.321NEO and A.321XLR variants.

Britten-Norman is set to return aircraft manufacturing to the UK when it moves production back to Bembridge, Isle of Wight. Britten-Norman, which makes the Islander propeller aircraft, started out at Bembridge but moved most of the production to Eastern Europe in the 1960s with a final assembly line in Southampton. The company now plans to invest in two production lines on the Isle of Wight creating hundreds of highly skilled jobs locally but also to retain its Southampton site. One aircraft to be built there is the planned Zero-Emissions Islander which is has received significant interest. The Zero Emissions Islander is being developed in association with Cranfield Aerospace Solutions.

De Havilland Aircraft of Canada Limited made a significant announcement at the Paris International Air Show. They unveiled their latest innovation, the DHC-6 Twin Otter Classic 300-G. With a combination of purchase agreements and letters of intent, the company has already secured commitments for a total of 45 aircraft. This introduction marks a new era for the iconic Twin Otter, which has been renowned for its reliability and versatility for over 50 years. Brian Chafe, the CEO of De Havilland Canada, expressed his excitement about the launch, stating, "For over 50 years, the DHC-6 Twin Otter has stood alone as the most reliable and versatile aircraft in its class." The DHC-6 Twin Otter Classic 300-G retains the rugged airframe of its predecessors but incorporates Pratt & Whitney technology for enhanced performance. One of the notable improvements is its lighter weight, which translates into increased payload range and decreased operating costs for customers. The Classic 300-G features an all-new cabin interior and flight deck equipped with Garmin fully integrated avionics

## **OTHER NEWS**

Located at Nagoya, Chubu Centrair International Airport, 22 miles south of Nagoya in central Japan is a shopping centre and theme park containing the first-ever Boeing 787 Dreamliner. The decision to open an exhibition featuring the prototype Boeing 787-8 in a shopping centre at Nagoya was not by accident. The Aichi Prefecture in central Honshu Island is the heart of the Japanese aerospace industry. The area played a huge role in building the Boeing 787, with Mitsubishi Heavy Industries, Fuji Aerospace Technology, and Kawasaki Heavy Industries supplying 35% of the plane's parts. The Boeing 787's wings, mid-forward fuselage, centre wing box, and main landing gear well were all manufactured in Japan. Once complete, the parts were transported aboard a Boeing 747 Dreamlifter for final assembly at Boeing's Everett, Washington, factory. In recognition of the Japanese company's role in bringing the aircraft to fruition on June 22, 2015, Boeing donated the prototype Dreamliner to Chubu Centrair International Airport. Serving the city of Nagoya, the airport is located in the third-largest metropolitan area in Japan, a region that is home to Toyota and Mitsubishi. With the airport handling millions of passengers per year, they opened a retail and leisure park called the "Sky Town Shopping Centre." Open to the public, the shopping centre features 61 shops and restaurants individually themed to look like they belong on a Japanese street.

The Flight of Dreams building is divided into two sections: the Flight Park and the Seattle Terrace. The Flight Park is an aviation-themed exhibition area where visitors can learn about



the history of flight. The site also features two flight simulators, and of course, you can explore the Boeing 787 Dreamliner on display and have your photo taken while sitting in the cockpit. In Flight of Dreams, there is also a young children's play area with swings and roundabouts. If you want to experience flying the Boeing 787, the simulator costs 1,080 yen (\$8.00) for five minutes and 12,420 yen (\$90) for a 30-minute flight. Inspired by the city where Boeing was founded, the Seattle Terrace features many shopping and dining options you would expect to find in Seattle. There are some Japanese restaurants and noodle bars for visitors who prefer local fare. The Flight of Dreams is also home to the first Boeing store opened outside the United States. You can buy official Boeing merchandise imported from the USA. In the Seattle plane maker's store. You will also find genuine Boeing aircraft parts which have been turned into furniture or fun decorative items for your home.

E-mail:- DWooller@Hotmail.co.uk

CREDITS Aircraft Illustrated, Airliner Watch, Airliner News, CH Aviation, UK Airline News, LBA Aviation Enthusiasts Facebook page, and all their contributors, Yorkshire Post, Telegraph and Argus, TTG,

## Scene around Yorkshire... Andy Wood (HAR)

**AUBOURN (Lincs.)** As expected G-CCEZ Easy Raider J2.2 was short lived here and has moved on following sale.

**BAGBY (NY)** G-AYZK DR.1050-M1 departed 28.5 to take up residence at Brighton.

**BEVERLEY (EY)** The well publicised Farewell Flypast by three Hercules C.4 took in our area and noted low level over the Racecourse at 14.25hrs on 14.6 were ZH870 (Omen 1), ZH868 (Omen 2) and ZH871 (Omen 3). At the airfield new residents are G-CCLX Quik and G-CFPA Sportcruiser ex Full Sutton.

**BURN (NY)** A new resident is G-DDEV KA.6CR.

**CHURCH FENTON (NY) 27.5** CS-PHQ EMB.505 (50500570) t Palma, G-BGWM PA-28, G-BSKA 150M, G-BVEZ/XM479 Jet Provost T.3A local flying, G-CGPY/671 A.75L300 wing walking flights, G-KION Cessna 525 f Bournemouth, N899JH 182T (18283134). **2.6** G-BSPE F.172P, G-CHPA R.22B, G-HOTB EC.155B1, N771SR SR.22 (2771), N781CD SR.20 (1423), ZZ418 Shadow R.1. **4.6** G-ILDA/SM520 Spitfire Tr.9 with G-IPPS GA.8 for pleasure flying operations on 5-6.6. **5.6** G-OCCX DA.42. **6.6** EI-JIA Beech 200 (BB-451). **9.6** A7-HMD EC.155B1 (6850) circuit training, G-BODD PA-28, G-FRNS Bell 407GX. **10.6** G-BAVL PA-23, G-BLVL PA-28, G-HEDL EA.300/LC, G-IISC EA.300/SC, G-IIXA XA.41 last three for an aerobic training camp (also 11.6). **12.6** G-LFIX/ML407 Spitfire Tr.9 and G-TFSI/414251/WZ-1 TF.51D for Press Day for Flying Legends. **13.6** G-ETME/F8+CA Nord 1002 and G-HUPW/R4118 Hurricane 1 both for a display at Harewood House. **14.6** G-XXLH Bell 505, N90078/(ZS-KMF) 208B (208B5741), N9008T/(ZS-KMI) 208B (208B5743) and N9008G/(ZS-KMH) 208B (208B5742) all f Reykjavik and night stop. They all carried the ZS- reg under the wing. **15.6** G-PKHA PC.12/47E f LBA t Cork, G-OSRL LJ45, N200RE Beech E.90 (LW-164) f Bournemouth, new resident. **16.6** G-ANHK/N9372 DH.82A f&t Brighton, G-HAZA DA.42NG, G-PKHA PC.12/47E f Cork t LBA, N95VB Beech C.90GTx (LJ-2091) f Berlin/Schonefeld t Brighton. **18.6** G-ILDA/SM520 Spitfire Tr.9 with G-IRTY Spitfire LF.IX both n/s for pleasure flights on 19-20.6, N850BG TBM.850 (367). **19.6** G-BDWM/"414673/LH-I" DB.1, G-BYKP PA-28RT, G-IRTY Spitfire LF.IX returned home, G-ROLY F.172N, N95VB Beech C.90GTx (LJ-2091) f Brighton t Cumbernauld and later f Cumbernauld t Cardiff. **20.6** EJ-VAIS PC.12/47E (2115) f&t Dublin, OK-ALT PA-46-500TP (4697466) f Karlovy Vary t Brno. **22.6** G-CMNW DA.62 new resident, only arrived in the UK at 14.55hrs at EMA, then arrived here 17.00hrs, was registered 7.6.

**CROSLAND MOOR (WY)** An interesting visitor on 4.6 was 21-AAP/F-JFIQ (28) SE.5A UL on route to Scotland. One of 21 aircraft from the Amiens area that had night stopped at Turweston, I am not sure what else called in here but more were present.

**DARLTON (Notts.)** A new resident is G-CHMV ASK13 with Darlton Gliding Club, whilst with a private owner G-DEGH T.65C is new.

**DEIGHTON/CRAB TREE FARM (NY)** In storage are XZ313, XZ316, XZ328, XZ343 and ZB692 Gazelle AH.1.

**DONCASTER/SOUTH YORKSHIRE AIRCRAFT MUSEUM (SY)** A new arrival 11.6 is the cockpit section of WT525 Canberra T.22 ex Cornwall Aviation heritage centre.

**ELVINGTON (NY)** G-AEVS Aeronca 100 arrived from Breighton 20.6 and night stopped, it was joined the following morning by G-AKAT/T9738 M.14A and G-AKPF/N3788 M.14A, both arriving from Breighton to take part in some film work. 'PF later departed to Old Warden with the others making the short flight back to Breighton.

**FULL SUTTON (EY)** Noted parked up on 28.5 was the visiting N3544M PA-31-325 (31-8012005). G-CFPA Sportcruiser has departed to Beverley following a change of ownership.

**GAMSTON (Notts.)** A new resident is G-BLLS T.67B noted 3.6, when visiting were G-BHFI F.152, G-CFTO Ikarus C42 FB80, G-EHMJ Beech S.35, G-PDGX P.68C-TC and G-RVRX P.68B. Visiting 8.6 were G-AXZD PA-28, G-CHIX DR.400, G-DJSM AS.340B3, G-JACS PA-28, G-LFSJ PA-28 and N986DT SR.22T (1630). Noted on a brief visit early evening on 9.6 were G-VNAV DA.62, D-EMXM SR.22-G3 (3740) and 9H-DGB DA.42M-NG (42.M016). Visiting on 14.6 was N180FN 180K (18053201). A new resident is G-COPR R.44.

**GEDNEY DYKE/WINGLAND (Lincs.)** On 3.4 Anwick based G-CBVB Ikarus C42 FB UK landed too fast, on initiating a go around it left the runway centreline and the left wing tip hit a parked vehicle just off the runway. The aircraft spun through 180 degrees and came to a halt.

**KIRTON IN LINDSEY (Lincs.)** Only frames visible on 30.5 were G-CKAB EuroFox 912S and G-FOKX EuroFox 912S.

**LEEMING BAR (NY)** Exelby Services on the A1(M) just north of Leeming Bar are to receive XX306 Hawk T.1A ex Scampton for display later this summer.

**MANBY/EASTFIELD FARM (Lincs.)** G-BGEI Baby Lakes, G-BPRD S.1C, G-BRJN S.1C and G-CHJO Midget Mustang are all up for sale due to the owners advancing years.

**MARKET RASEN/FIR PARK (Lincs.)** Visited by Mark on 10.6, noted were G-FOSY MS.880B fuselage on the back of a lorry and the pink AA-1 fuselage, which has never been identified, is now painted yellow with the fictitious registration "G-FLAP" painted on one side of the fin. There was no sign of the wfu G-BVLP PA-38 or any other aircraft, apart from visitors G-CLAL Ikarus C42 FB100 and G-PTAR Skyranger 912S.

**NORTH COATES (Lincs.) Residents** G-PTAR Skyranger 912S is a new resident arriving 3.5 from Riby. G-RODC Skybolt is a new resident arriving 17.5 from Liverpool. Long term resident on rebuild N259SA F.172H (F172-0278) has been sold and flew out to Little Snoring on 24.5.

**Movements 1.5** G-BEVC Rallye 150ST f&t Eddsfield. **2.5** G-BSYV 150M f Strubby t Sandtoft.

**3.5** G-TGTT R.44 f&t Cabourne. **13.5** G-LOFM Mx.7-180A f&t Temple Bruer. **14.5** G-CEBF EV.97A f&t Forwood Farm, G-AXAT D.117A f&t Rufforth East. **16.5** G-BUUJ T.67M f&t Full Sutton, G-BCRR AA-5B f Sturgate t South Cave. **17.5** G-AMYD J/5L f&t Wickenby, G-CGCH Sportcruiser with G-GDSO Cavalon both f Beverley t Elvington, G-SAUL HR.200 f Elmsett t Fenland. **18.5** G-IKON RV.4 f&t Beccles. **20.5 Spring Fly-In** G-IIDR Ikarus C42 FB100 f&t Halfpenny Green, G-AVWA PA-28 f Tibenham t Sturgate, G-CLNP SA.500 f&t Defford/Croft Farm, G-CKMX RV.7 f&t Felthorpe, G-CLDV Cavalon f&t Felthorpe, G-ATLM F.172G f Wickenby t Sturgate, G-MLXP Europa TW f&t Sturgate, G-CGIP Sportcruiser f&t Barton, G-AKVM 120 f&t Wickenby, G-HORK Pioneer 300 f&t Eshott, G-TGTT R.44 f Coney Park t Claxby, OK-LTM R.44 (1833) f Coney Park t Cabourne, G-WEFR Pioneer 200 f&t Fishburn, G-CCZD RV.7 f Rectory Farm t Breighton, G-RVAN RV.6 f&t North Weald, G-VIXY A-32 f&t Fishburn, G-SKUB Kub f&t Cromer, G-BHZU/3914 J.3C-65 f&t Sandtoft, G-CGLT Sportcruiser f Turweston t Fishburn, G-BYIK Europos f&t Full Sutton, G-RVUK RV.7 f Sibson t Breighton, G-

CEBF EV.97A f&t Forwood Farm, G-CDLS Jabiru J400 f&t Fishburn, G-CINL Skyranger 912S f&t Fishburn, G-BLLO PA-18 f&t Gamston, G-CENO WT9 UK f&t Felixkirk, G-RODW EuroFox 2K f&t Old Warden, G-CBMR EclipseR f Rufforth East t North Moor, G-ARHB F.1A f&t Popham, G-IANZ Quik f Rufforth East t North Moor, G-GDAC AA-5A f&t Gamston, G-CHHI RV.7 f Netherthorpe t Skegness, G-VELA S.205-22/R f&t Hardwick, G-DCDO Ikarus C42 FB80 f Gamston t Dysons Farm, G-ASKL D.150 f&t Hardwick, G-MURG RV.6 f&t North Weald. **21.5**

**Spring Fly-In** G-WIGY S.1S f&t Rectory Farm, G-RIVE D.153 f&t Sturgate, G-MIAN Skyranger 912S f&t Sandtoft, G-CYLL F.8L f&t Sherburn, G-CJTE EuroFox 3K f&t Ringstead, G-BZUL Jabiru UL f&t North Moor, G-MZBH Rans S.6 f&t North Moor, G-DIYA Sling 4TSi f&t North Weald, G-BZOR Mini-Max 91 f&t Strubby, G-RBHB Ikarus C42C FB100 f Gamston t Cromer, G-CIRY EV.97 f&t Leicester, G-FLYO EV.97 f Beverley t Brighton, G-RETA CASA1.131E f Rectory Farm t Brighton, G-TEZZ Sportcruiser f&t Beverley, G-CEME EV.97 f&t Caunton, G-GDSO Cavalon f Beverley t Brighton, G-FOXV A-22LS f&t Fishburn, G-BRPY PA-15 f&t Brighton, G-CGTR Skyranger 912S f Watnall t Wickenby, G-AMYD J/5L f&t Wickenby, G-BZRV RV.6 f&t Hinton in the Hedges, N7954J PA-28R-200 (28R-7635125) f Sandtoft t Netherthorpe, G-CFLD Ikarus C42 FB80 f Felixkirk t Brighton, G-TBDI Ikarus C42 FB100 f&t Boston, G-IHCI Europa TG f Beverley t Brighton, G-BJAL CASA1.131E f&t Brighton, G-GBFL GY.201 f&t Beverley, D-EGMC DR.253B (155) f Beverley t Brighton, G-CTDH CT2K f&t Felixkirk, G-CDSK Escapade f&t Bucknall, G-BSPE F.172P f Brighton t Boston, G-CFUE Pioneer 300 f&t Crosland moor, G-RVAW RV.6 f&t Rectory Farm, N909PH PA-23 (23-1800) f South Cave t Brighton, G-BHEG D.150 f&t Warrington, G-IIHX Midget Mustang f&t Shipdham, G-CICM Calidus f&t Holmbeck Farm, G-TIMC R.44 f&t Cabourne, G-AYHX D.117A f Oxenhope t Brighton, G-MESH Sportcruiser f Oxenhope t Brighton, G-AYGA D.117 f Oxenhope t Brighton, G-TGTT R.44 f&t Cabourne, G-IKON RV.4 f Great Oakley t Beccles, G-CMMW Exodus Deltajet 500 Stingray f&t St.Michaels, G-RSKY Skyranger 912S f&t St.Michaels, G-BZMJ Rans S.6 f&t Huthwaite, G-APBW Auster 5A f&t Cheddington, G-CGGO DR.400 f&t Little Snoring, G-ATNE F.150F f&t Little Snoring, G-OPUG PS-28 f&t Shipmeadow, G-RPRV RV.9A f&t Kemble, G-SEVN RV.7 f&t Netherthorpe, G-CGIP Sportcruiser f&t Barton, G-RMAV Ikarus C42 FB80 f&t Beverley, G-AIEK/"RG333" M.38 f&t Fen Lane Farm, G-AVWA PA-28 f&t Netherthorpe, G-FION/"441968/VF-E" T.51 f&t Netherthorpe. **23.5** G-IKON RV.4 f&t Beccles, OK-LTM R.44 f&t Cabourne, G-TGTT R.44 f Cabourne t Claxby. **26.5** D-MODL WT9 (DY348/2010) and D-MTYP Bristell UL RG (157) both f Calais t ? **27.5** G-MSKY Ikarus C42 FB UK f&t Saltby. **28.5** G-CCTE MCR.01 f&t Knettishall.

**NORTH DUFFIELD/BIRCHWOOD (NY)** Resident LY-XNY Auster J/2 has now been reregistered G-CMPT.

**NORTH MOOR (Lincs.)** G-MYRS Quantum 15 has moved out, to Wickenby following sale.

**NORTH SOMERCOTES (Lincs.)** Still present on 30.5 were the three Whirlwinds XP328, XP329 and XJ407.

**NORTHORPE (Lincs.)** G-LUDM RV.8 has departed following sale.

**NOSTELL ESTATE (WY)** On 1.6 the second new helicopter, G-YORX Bk.117D-3 for YAA was delivered, it is due to go to Topcliffe later in the month. On 5.6 all four helicopters G-YAAA, G-YAAC, G-YOAA and G-YORX assembled at the Nostell Air Support Unit and flew a formation flight around York and the local area with G-DCAM AS.355NP acting as camera ship. G-YAAC and G-YOAA will soon be heading off to new homes with G-YOAA departing to Oxford on 7.6 for preparation for new owners.

**RUFFORTH WEST (NY)** A new resident is G-CFRC Nimbus 2B.

**SCAMPTON (Lincs.)** The four HHA airframes mentioned a couple of months ago are stored on farmland outside the airfield boundary, with three of them wrapped. These should be XF995/K Hunter T.8B, XX885/G-HHAA Buccaneer S.2B, 37+89 F.4F and 98+14 Su.22M.

**SHERBURN (NY)** Noted visiting on 28.5 between 12.05 and 14.00hrs were G-BEXW PA-28, G-BTRS PA-28, G-BXJD PA-28 f Full Sutton t Brighton, G-CDJK Ikarus C42 FB80, G-CFMI Skyranger 912S and G-GAVV CTSL. Noted visiting on 4.6 10.00 to 16.00hrs were G-AZIJ

DR.360, G-BIDH 152, G-BSYV 150M, G-CDTY MXP.740, G-CEMY Pioneer 300, G-CFPA Sportcruiser, G-CIRY EV.97, G-DACF 152, G-FLYO EV.97, G-GDSO Cavalon, G-TEZZ Sportcruiser and N89GH SR.22 (1178) f&t Stapleford. Visiting at lunchtime on 7.6 were G-ATLM F.172G and G-HACS P2002-JF. Reasonably busy on 16.6, with Sherburn Engineering containing G-CJIN/582 A.75L300, G-CSBD PA-28 (still marked as such), G-OAJS PA-39 and G-RAMS PA-32R. Visiting between 10.15 and 15.50hrs were G-BDSH PA-28, G-CEZO PA-28, G-CIYL EuroFox 912iS, G-CTCL TB.10, G-NELI PA-28R, G-RMAV Ikarus C42 FB80, G-RVDC RV.8, G-STVT Sportcruiser, G-TERO RV.7, G-UZUP EV.97A, N65JF PA-28-181 (28-7990140) and star visitor OY-9977 Blackwing BW.600RG (014) f Fishburn t Brighton. G-BCVG FRA.150L which was hanged here for a short time has now moved to Sandtoft. A short visit on 21.6 found Sherburn Engineering was as 16.6 with the addition of G-BKKO 182R, which is resident. Visitors noted between 14.10 and 15.05hrs were G-AYFC D.62B f Sturgate t Brighton, G-IROB TB.10 and G-OCCH DA.40D.

**SKEGNESS (Lincs.)** A visit 3.6 found residents G-ARCW PA-23 wfu, G-PKUP Ikarus C42C FB100 and XS456/DX Lightning T.5. Visitors between 13.30 and 15.15hrs were G-AXTC PA-28, G-AYFC D.62B f&t Brighton, G-BVGT Auster J/1A, G-BVRA Europa, G-CLAL Ikarus C42 FB100, G-FION/"441968/VF-E" T.51, G-HELN/EI-69 PA-18, G-ORAE RV.7, G-RRVX RV.10, G-RVTB RV.7 and G-SEVN RV.7. A further visit on 14.6 found the same three residents visible whilst visitors from 10.10 to 13.00hrs were G-AXTC PA-28 f&t North Coates, G-AYFC D.62B f&t Brighton, G-CDBX Europa XS-TG f&t Sturgate and G-CMKN Ikarus C42 FB80 f&t Priory Farm.

**SOUTH CAVE/MOUNT AIREY (EY)** G-AXNJ D.120 and G-RINS Rans S.6 have both departed following sale.

**STRUBBY NORTH (Lincs.)** G-BRIV TB.9 has departed to take up residence at Sturgate.

**STURGATE (Lincs.)** A new resident with Lincoln Aero Club from mid-June is G-BRIV TB.9 ex Strubby North. A visit for lunch on 21.6 noted G-BBHF PA-23, G-BGHJ F.172N, G-BTMR 172M, G-MLXP Europa TW and N761JU T.210M in Eastern Air's Hangar. One of the small hangars contained G-BIPN RF.3, G-BKSE Quickie 1 (soon to depart following sale) and G-BVUZ 120. Residents outside were G-AZTS F.172L, G-BRPV 152, N65PF PA-30 (30-1515) and N147GT SR.22-G2 (1069). Visitors between 12.05 and 13.40hrs were G-AYFC D.62B f Brighton t Sherburn, G-AZUZ FRA.150L f&t Netherthorpe and G-CKZX GlaStar f Strubby North.

**TEMPLE BRUER (Lincs.)** G-BAMR PA-16 has departed to take up residence at Heathfield/Bradleys Lawn following the owners relocation.

**WADDINGTON (Lincs.)** Noted on 8.6 were F-RBAT/075 A.400M of the French Air Force and G-LNCC AW.169.

**WATNALL (Notts.)** On 2.4 resident G-CFGD Quik experienced a gust of wind before touchdown, causing it to bounce. The aircraft veered off the runway and struck a hedge.

**WICKENBY (Lincs.)** The only thing noted on a visit 8.6 were XE624/G Hunter FGA.9 dismantled, XE685/ G-GAII/861/VL Hunter GA.1, G-BNME 152 flying and G-CLMH Pipistrel Alpha parked by the tower. Only the above residents noted again on 17.6 when I visited for the Vintage Piper Aircraft Club Northern Meet, although it was in the Condor as the Vagabond was u/s! Visitors noted up to 13.30hrs were D-ESTS PA-18-150 (18-7893), G-AJS 120, G-AJKB Luscombe 8E, G-AKVO BC.12D, G-ARNE PA-22, G-ARNJ PA-22, G-ASHU PA-15, G-AXHR/329601 J.3C-65, G-AXTC PA-28, G-AYFC D.62B, G-AYGG D.120, G-AZFM PA-28R, G-BAKR D.117, G-BJTP/EI-51 PA-18-95, G-BKJB PA-18-135, G-BLLO PA-18-95, G-BPYJ W.8, G-BSED PA-20, G-BSFD/16037 J.3C-65, G-BSNF J.3C-65, G-BVUZ 120, G-CCVM RV.7, G-CCZZ EV.97, G-CDSB Pioneer 200, G-CEHR/XP241 Auster AOP.9, G-CGIY/330244 J.3C-65, G-CLFG TL.3000, G-GYAT GY.80, G-OVON PA-18-95, G-PAXX PA-20, G-RIVT RV.6 and G-STRV RV.14. Resident G-IIRI XA.41 has departed following sale, whilst G-MYRS Quantum 15 has moved back in ex North Moor.

**RESIDENTS**

G-ANHK/N9372 DH.82A to Netherthorpe for Annual 27.5, returning on 2.6. G-AYZK DR.1050-M1 is a new resident arriving from Bagby on 28.5. G-BRVE D.17S to Duxford for Annual on 8.6 (with G-EKTP acting as crew ferry). G-CYLL F.8L returned from Sherburn on 30.5. See also Elvington for some resident activity.

**OUTSIDE PARKING**

G-BBJX F.150L, G-BEZI AA-5, G-HELA TB.10, G-PPFS FRA.150L and HB-CIU FR.172J have all been present throughout. G-PAWS AA-5A returned from maintenance at Bagby on 10.6. G-ASEP PA-23 is still away on maintenance.

**MOVEMENTS**

**25.5** G-AYHA AA-1 f&t Rufforth, G-CFTZ EV.97 f&t Hawksview, G-GMCM AS.350B3 fuel stop, N500SY 369E (0007E) f Filey t Shoreham. **26.5** G-AXAT D.117A f&t Rufforth East, G-BNOJ PA-28 f&t Blackpool, G-BPXA PA-28 f&t Netherthorpe, G-CCDS HN.700 f&t Carlisle, G-JBSP Jabiru SP f&t ?, G-RVIW RV.9 f&t Ludham, N95VB Beech C.90GTx (LJ-2091) f Sleaf t Southampton. **27.5** G-ASMJ F.172E f Sherburn t Netherthorpe (crew ferry for G-ANHK pilot) then f Netherthorpe t Sherburn, G-AZFI PA-28R f&t Sherburn, G-BODB PA-28 f Fishburn t Sherburn, G-CBRD D.18 f&t Patrick Brompton, G-CMJU Ikarus C42 FB100 f&t North Coates, G-EKOS FR.182RG f&t Sherburn, G-SFTZ T.67M f Fishburn t Church Fenton, G-VORN EV.97 f White Fen Farm t Pilling Sands. **28.5** G-BRPY PA-15 f&t Sherburn, G-BXJD PA-28 f Sherburn t Full Sutton, G-XLNT CH.601XL f&t Crosland Moor, N909PH PA-23 f&t South Cave. **29.5** G-AYGA D.117 f Rufforth East t Oxenhope, G-BFTH F.172N f Eddsfield t Sherburn, G-FOKX EuroFox 912S f&t Kirton in Lindsey, G-REMH B.206B (Costock 08) pleasure flights all day, G-VICA T.66 f North Coates t Beverley. **31.5** G-SACS PA-28 f&t Sherburn. **1.6** G-BPUU 140 f Netherthorpe t South Cave. **2.6** G-BRPY PA-15 f Sherburn t Bagby, G-IIIIX S.1S f&t ? (fuel stop). **3.6** G-ADYS Aeronca C.3 f&t Saltersgate, G-BFRR FRA.150M f Tatenhill t Fishburn, G-BSYV 150M f&t Sandtoft, G-BZBF 172M f&t Sandtoft, G-CESA Dr.1050 f&t Penley, G-HORK Pioneer 300 f&t Eshott, G-MUMY RV.4 f&t Abbots Bromley, G-NMCC A.1C-180 f Inverness t Heathfield, G-OJLD RV.7 f Sherburn, went u/s, n/s, G-SACT PA-28 f&t Sherburn, G-SUTE RV.8A f&t Abbots Bromley, G-YCMI Sonex f&t Abbots Bromley. **4.6** G-BHZV D.120A f&t Brook Farm, G-BKKN 182R f&t Gamston, G-CCZD RV.7 f&t Rectory Farm, G-CDJK Ikarus C42 FB80 f&t Beverley, G-CDTY MXP.740 f Sherburn t Beverley, G-CFPA Sportcruiser f Sherburn t Beverley, G-CIRY EV.97 f Sherburn t Leicester, G-FLYO EV.97 f Sherburn t Beverley, G-FUZZ/51-15319 PA-18-95 f&t Gypsy Wood, G-GDSO Cavalon f Sherburn t Beverley, G-NJCZ PS-28 f Elvington t Andrewsfield, G-OJLD RV.7 t Sherburn, G-SAAA CTSW f&t Sherburn, G-TEZZ Sportcruiser f Sherburn t Beverley, G-XLNT CH.601XL f&t Crosland Moor, N909PH PA-23 f&t South Cave. **5.6** G-BAPX DR.400 f&t Sherburn, G-JONL Sportcruiser f Sherburn t South Cave. **8.6** G-BXHT Midget Mustang f Westfield 2 x n/s, G-EFER PA-18 f&t Sutton Bank. **10.6** G-BAPX DR.400 f&t Sherburn, G-BBFL GY.201 f&t Beverley, G-BOER PA-28 f Netherthorpe t Eddsfield, G-BPUU 140 f&t South Cave, G-BXHT Midget Mustang t Perth, G-BZBF 172M f&t Sandtoft, G-CBRD D.18 f&t Patrick Brompton, G-CBTO Rans S.6 f Watchford Farm n/s, G-

CEVS EV.97 f Eshott t Cliffe, G-CICM Calidus f Holmbeck Farm n/s, G-CITD RF.5B f&t Coal Aston, G-CTDH CT2K f&t Felixkirk, G-CVET CTLS f Brown Shutters Farm n/s, G-DWYP Skyranger 912S f Sherburn t Rufforth East, G-ISPH B.206B f&t ? (fuel stop), G-OKLY F.150K f ? n/s, G-ROZZ Ikarus C42 FB80 f Fishburn t Eddsfield. **11.6** G-BLRL CP.301C-1 f North Moor t Beverley, G-BMJD 152 f&t EMA, G-BNOH PA-28 f North Coates t Sherburn, G-BZBF 172M f&t Sandtoft, G-CBTO t Watchford Farm, G-CEBF EV.97A f Otherton t Forwood Farm, G-CICM Calidus t Holmbeck Farm, G-CVET CTLS t Brown Shutters Farm, G-FUZZ/51-15319 PA-18-95 f&t Gypsy Wood, G-JAYZ Sportcruiser f Otherton t Forwood Farm, G-OKLY F.150K t ?, AB910/SH-F Spitfire LF.Vb low level flyover 14.48hrs f Coningsby to display at Newby Hall. **12.6** G-GBUA A-32 f Bagby t Sherburn. **13.6** G-AHBM DH.87B f&t Saltersgate, G-BAPX DR.400 f&t Sherburn, G-BRVJ T.31M f Yearby t Eddsfield, G-WEEV RV.8 f Sleaf t Prestwick. **14.6** G-BAXS Bell 47G-5 f&t Gembling, G-BEZZ D.112 f&t Barton, G-BORL PA-28 f Blackpool t Sherburn, G-BOSM Dr.253B f&t South Cave, G-ONGC DR.400 f&t ?, G-PTEK RV.9A f Blackpool t Sherburn, ZM701 AH.64 (AAC321) flyover NW to SE at 14.30hrs. **16.6** G-BPVA 172F f&t Barton, G-MLAW Quik f&t Beverley, N95VB Beech C.90GTx (LJ-2091) f Church Fenton t Denham, OY-9977 Blackwing BW.600RG (014) f Sherburn n/s. **17.6** G-AHBM DH.87B f White Waltham t Saltersgate, G-AHSS J/1N-160 f&t Spanhoe, G-AJKB Luscombe 8E f North Moor t Barton, G-AKDN DHC.1 f&t Bagby, G-BRIV TB.9 f&t Sturgate, G-CCDX EV.98 f North Moor t Barton, G-CCEJ EV.97 f&t Park Hall Farm, G-CGDI EV.97A f&t Netherthorpe, G-CGIY/330244 J.3C-65 f Wickenby t Perth, G-CLFG TL.3000 f Barton t Wickenby, G-EKOS FR.182RG f&t Sherburn, G-GEZZ B.206B f&t ?, G-ICAS S.2B f&t Sherburn, G-IIRP CAP232 with G-NGTC Extra NG both f display at Cleethorpes t Wombledon, G-SAAA CTSW f&t Sherburn, G-SFTZ T.67M f&t Church Fenton, G-TVHB EC.135P2+ (Police 42) fuel stops at 11.00 and again at 22.00hrs, OY-9977 Blackwing BW.600RG (014) t Farbaek, Denmark, direct (3hrs 50mins straight across the North Sea!). **18.6** G-TVHB EC.135P2+ (Police 42) was back again for fuel at 02.00hrs, G-CBOY Quantum 15-912 with G-CCLX Quik both f&t Beverley, G-POLA EC.135P2+ (Police 28) f&t Newcastle (training), G-SACT PA-28 f&t Sherburn. **19.6** N95VB Beech C.90GTx f Denham t Church Fenton. **20.6** G-AKPF/N3788 M.14A f Old Warden n/s. **21.6** G-AKPF/N3788 M.14A t Elvington, G-CBAK R.44 fuel stop.

## Coney Park....

Mike Storey

|          |        |                     |                            |
|----------|--------|---------------------|----------------------------|
| 3rd May  | G-XITE | BELL 505            | DENHAM/ CONEY PARK         |
| 3rd May  | G-XITE | BELL 505            | CONEY PARK/DENHAM          |
| 7th May  | G-IOOK | AUGUSTA A109E POWER | LOWARTH PARK/ PRIVATE SITE |
| 16th May | M-AWOL | SIKORSKY S76D       | LONDON/LONDON              |
| 16th May | G-DVIP | AUGUSTA A109E POWER | NOTTINGHAM/CROSSLAND MOOR  |
| 16th May | G-DVIP | AUGUSTA A109E POWER | CROSSLAND MOOR/NOTTINGHAM  |
| 16th May | G-NIOG | ROBINSON R44        | DENHAM/DENHAM              |

**Credits**

The Airfield Manger, the Michael Hanks team, the Sandtoft Service team and the Sandtoft Fire Crew. A regular credit for my visits is my driver S Hobson.

**General**

47 residents.

**Sandtoft Wrecks & Relics** (EI-CDX) C.210K wfu parked outside on the grass for over a year, no port side door.

**Aircraft awaiting rebuild, maintenance during the month or out for collection were**

|          |                     | First noted | Last noted |
|----------|---------------------|-------------|------------|
| (EI-CDX) | C.210K              | 19/02/2022  | 31/05/2023 |
| G-AVIL   | Alon A2             | 10/09/2022  | 31/05/2023 |
| G-BBNI   | PA-34 for sale      | 06/11/2021  | 31/05/2023 |
| G-BEAC   | PA-28               | 13/05/2023  | 13/05/2023 |
| G-BFGL   | FA.152M             | 08/03/2019  | 20/05/2023 |
| G-BGBW   | PA-38 wfu           | 25/05/2020  | 31/05/2023 |
| G-BIFB   | PA-28 on rebuild    | 15/04/2018  | 20/05/2023 |
| G-BIHI   | C.172M wfu          | 05/06/2021  | 20/05/2023 |
| G-BLPP   | F.172G              | 04/02/2023  | 20/05/2023 |
| G-BSXI   | M20E dismantled wfu | 18/03/2023  | 20/05/2023 |
| G-MICK   | F.172N on rebuild   | 02/05/2019  | 20/05/2023 |
| G-MSFC   | PA-38 wfu           | 05/06/2021  | 20/05/2023 |

**Residents General**

|        |                           | First noted | Last noted |
|--------|---------------------------|-------------|------------|
| G-AZNO | C.182P                    | 08/05/2018  | 31/05/2023 |
| G-BCGI | PA-28                     | 15/03/2018  | 31/05/2023 |
| G-BDNW | AA-1 rebuild wfu          | 18/03/2023  | 18/03/2023 |
| G-BGTF | PA-44 wfu                 | 31/07/2021  | 17/03/2023 |
| G-BHZU | J-3C                      | 15/04/2018  | 15/04/2018 |
| G-BOMP | PA-28                     | 20/04/2018  | 31/05/2023 |
| G-BRJC | C.120                     | 18/02/2023  | 29/04/2023 |
| G-BULR | PA-28 wfu                 | 15/04/2018  | 09/05/2019 |
| G-BYJL | Pulsar                    | 14/12/2020  | 13/05/2023 |
| G-CGTV | Savannah                  | 14/01/2023  | 14/01/2023 |
| G-CHVS | Savannah                  | 09/10/2021  | 11/03/2023 |
| G-CIMI | G.115                     | 13/05/2023  | 31/05/2023 |
| G-CKXI | M.20E                     | 13/09/2021  | 15/04/2023 |
| G-IMIK | PA-28                     | 24/10/2020  | 20/05/2023 |
| G-LORD | PA-34                     | 21/03/2023  | 31/05/2023 |
| G-MIAN | Skyranger                 | 23/10/2021  | 06/05/2023 |
| G-MMMG | Quicksilver               | 18/03/2023  | 06/05/2023 |
| G-MZOS | Quantum                   | 17/11/2018  | 18/03/2023 |
| G-TAXI | PA-23 on rebuild wfu      | 06/05/1996  | 20/05/2023 |
| G-TAYI | G.115                     | 08/05/2018  | 20/05/2023 |
| G-TEFC | PA-28 engineless for sale | 16/08/2021  | 31/05/2023 |
| G-WLGC | PA-28                     | 19/04/1996  | 13/05/2023 |
| G-YBAA | F.172J                    | 04/03/2023  | 20/05/2023 |
| N20UK  | M.20F for sale            | 29/03/2019  | 31/05/2023 |

|          |                       |            |                              |
|----------|-----------------------|------------|------------------------------|
| N39TA    | Be A24 wfu            | 02/03/2019 | 18/03/2023                   |
| (N131MP) | PA-31P dismantled wfu | 18/05/2018 | 20/05/2023 to become G-BWDE, |
| N337UK   | C.337 on rebuild      | 08/05/2018 | 20/05/2023                   |
| N2136E   | PA-28R for sale       | 14/07/2018 | 31/05/2023                   |
| N7954J   | PA-28R                | 18/03/2023 | 20/05/2023                   |

### Resident Yorkshire Aero Club aircraft seen were

|        |                        | First noted | Last noted |
|--------|------------------------|-------------|------------|
| G-BBKA | F.150L                 | 30/10/2020  | 28/05/2023 |
| G-BGBI | F.15L                  | 31/04/2021  | 31/05/2023 |
| G-BHVR | C.172N                 | 11/03/2023  | 31/05/2023 |
| G-BRNC | C.150M Away on rebuild | 06/11/2021  | 03/12/2022 |
| G-BSKA | C.150M                 | 10/07/2021  | 31/05/2023 |
| G-BSYV | C.150M                 | 31/10/2020  | 31/05/2023 |
| G-BZBF | C.172M                 | 15/12/2020  | 27/05/2023 |
| G-MABE | F.150L Away on rebuild |             |            |

### Movements 2023

01/05 G-ATJN D.119 f Wickenby t Brighton, G-BCRR AA-5B f/t Sherburn, G-GEFF PC-12/47E.

02/05 G-BHEV PA-28D f/t Gamston, G-BCRR AA-5B f/t Sherburn, G-BODZ R.22 f/t Nottingham, G-LWLW DA.40D f Prestwick t Gamston.

03/05 G-GEFF PC-12/47E, G-PROW EV-97A f/t Full Sutton, G-MFLT AS 365N3 f Leeds East t Biggin Hill.

05/05 G-CGDI EV-97A f/t Netherthorpe.

07/05 G-PPFS FRA.150L f/t Brighton.

09/05 G-OOCP TB-10 f/t North Coates.

11/05 G-BRPY PA-15 f/t Sherburn.

13/05 G-EKOS FR.182RG f/t Sherburn, G-BXEX PA-28 t Nottingham, G-BNOH PA-28 f/t Sherburn, G-EFBP FR.172K f/t Sherburn, G-OAJS PA-39 f/t Sherburn, G-OOCP TB-10 f/t North Coates, G-CSAV T.600N f-t North Coates.

16/05 G-CDLL MCR-01 ULC f/t Sherburn.

18/05 G-AXNS B.121 f Sherburn t Gamston.

20/05 G-TALE PA=28 f Tatenhill t Gamston, G-CHPA R.22 Beta f/t Humberside, G-BOSM DR.2538 f/t Mount Airy.

22/05 G-GEFF PC-12/47E.

23/05 G-GEFF PC-12/47E.

27/05 G-CIRT MTOsport f North Weald t Kirkbride.

28.05 N182GC C.182 f/t Nottingham.

29/05 G-HARN PA-28

Thanks to Michael for the complete resident list

### AircraftBasedatSandtoft Airfield

1. EI-CDX C210K wfu
2. G-AZNO C182P
3. G-BBNI PA-34
4. G-BCGI PA-28
5. G-BDNW AA-1on rebuild wfu
6. G-BFGL F152M
7. G-BGBW PA-38 wfu
8. G-BGTF PA-44
9. G-BHZU J-3C



10. G-BIFB PA-28 on rebuild wfu
11. G-BIHI C172M wfu
12. G-BLVS C150M wfu
13. G-BOMP PA-28
14. G-BRJC C120
15. G-BSXI M.20E wfu
16. G-BULR PA-28 wfu
17. G-BYJL Pulsar
18. G-CGTV Savannah
19. G-CHVS Savannah
20. G-CIMIG.115
21. G-CKXI M.20E
22. G-IMIK PA-28 away for repaint
23. G-LORD PA-34 for sale
24. G-MIAN SkyRanger
25. G-MICK F172N
26. G-MMMA Quicksilver
27. G-MSFC PA-38 wfu
28. G-MZOS Quantum
29. G-TAXI PA-23 on rebuild wfu
30. G-TAYI G.115
31. G-TEFC PA-28 wfu
32. G-WLGC PA-28
33. G-YBAA F172J
34. N131MP PA-31P to become on rebuild G-BWDE wfu
35. N20UK M.20F
36. N2136E PA-28R for sale
37. N337UK F337G on rebuild wfu
38. N39TA Be A24 wfu
39. N7954J PA-28R

Yorkshire Aero Club

1. G-BBKA F150L
2. G-BGBI F150L
3. G-BHVR C172N
4. G-BRNC C150M away on rebuild
5. G-BSKA C150M
6. G-BSYV C150M
7. G-BZBF C172M
8. G-MABE F150L away on rebuild

None Residents In For Maintenance

1. G-AVIL A-2
2. G-BEAC PA-28
3. G-BLPF F172G



G-BHZU PAJ3C-65 Cub 20/5



G-OOCP Socata TB10 13/05



G-EFBP Cessna FR172K

**Credits** Eastern Air Executive Ltd (EAE), Sturgate Flying Club, Andy Wood and driver Mrs S Hobson.

**Sturgate Wrecks & Relics** There are only two here G-BDDG D.112 wfu it is in the LAC hangar and G-BGVE CP.1310-C3 minus engine in one of the SFC hangars.\_

### Resident Aircraft noted during the month

|                         | First noted | Last noted |
|-------------------------|-------------|------------|
| G-ARRS CP.301A          | 14/09/2021  | 22/04/2023 |
| G-ATLM F.172G           | 22/05/2021  | 08/04/2023 |
| G-AWGK F.150H           | 04/09/2021  | 20/05/2023 |
| G-AZTS F.172N           | 14/01/2020  | 20/05/2023 |
| G-BBHF PA-23            | 14/01/2020  | 20/05/2023 |
| G-BDDG D.112 wfu        | 04/01/2020  | 08/04/2023 |
| G-BGHJ F.172N           | 25//10/2020 | 22/04/2023 |
| G-BGVE CP.1310-C3 wfu   | 04/01/2020  | 08/04/2023 |
| G-BIPN RF.3             | 25/02/2023  | 08/04/2023 |
| G-BRPV C.152            | 18/02/2020  | 20/05/2023 |
| G-CIFC TB.200           | 04/01/2020  | 22/04/2023 |
| G-EXLL CH601XL          | 0401/2020   | 08/04/2023 |
| G-FARY TRI-Q,           | 04/01/2020  | 08/04/2023 |
| G-GAME T.303            | 29/07/2020  | 22/04/2023 |
| G-MLXP Europa           | 14/12/2021  | 20/05/2023 |
| G-OMCB TL2000           | 20/11/2021  | 08/04/2023 |
| G-OPAZ Pazmany PL2      | 14/01/2020  | 13/06/2021 |
| G-RICO AG-5B            | 19/03//2023 | 08/04/2023 |
| G-SHMN Alpi Pioneer 300 | 19/03//2023 | 19/03/2023 |
| N147GT SR22             | 05/04/2010  | 20/05/2023 |
| N761JU T.210M           | 18/01/2020  | 08/04/2023 |
| N888BR PA-32R           | 19/03//2023 | 08/04/2023 |
| N955BE Be95 B55         | 18/02/2023  | 20/05/2023 |

### Aircraft awaiting rebuild, maintenance during the month or out for collection were

|              | First noted | Last noted  |
|--------------|-------------|-------------|
| G-AWEX PA-28 | 22/04/2023  | 14/05//2o23 |

### Movements

- 02/05 G-BGXS PA-28 f/t Gamston, G-MPAA PA-28 f/t Sleep, G-BNME C.152 f/t Wickenby, G-BGXS PA-28 f/t Gamston.
- 14/05 G-BXJD PA-28 f Full Sutton t Brighton.
- 15/05 G-GGEM PA-28 f/t Beverley.
- 16/05 G-BCRR AA-5B AA-5B f/t Sherburn, G-TSGJ PA-28 f-t Teesside, G-ZGZG C.182T f Shobdon t Sleep.
- 17/05 G-CBPI PA-28R f/t Bagby, G-CEIT RV 7 f/t Leicester.
- 18/05 G-AZUZ FRAU.150L f/t Netherthorpe, G-MZFU Thruster f Orston t Headon.
- 20/05 G-BBJX F-150L f/t Brighton.

One of the members of Easton Air Exec informed me the owner is selling the business in the next two months.

## HELICOPTER ACTIVITY

01/05 M-INES AW.109SP, p/s Coventry – p/s Cleethorpes  
01/05 G-CLCP Bell 505, Pontefract Race Course – Devonshire Arms  
02/05 G-KLNM Squirrel(Saxonair 12), Norwich – Croft - Leeds/East  
03/05 M-LEOG AW.109SP, Halifax – Huggate – p/s Stoke  
03/05 G-WPDD EC-135, Nottingham – p/s Lincoln  
03/05 G-CPTZ AW.169(Helimed 81), Scarborough – Hull R/I E  
05/05 G-LARD R.66, Bedford – Ferrybridge – Bedford  
05/05 G-FRGP A.109E, Huggate – Oxenhope  
06/05 G-VGMC Twin Squirrel(Kingdom 07) Biddulph Moor – Thirsk R/C  
07/05 G-PACO S-76C, Isle of Man – p/s Clitheroe  
08/05 G-HCNX EC-155, Bristol – Redcar/Yearby  
10/05 G-YRTE A.109S. East Midlands – Doncaster Race Course  
11/05 G-HPIN Bell 439, Nin Monkton – Ben Rhydding Golf Club  
14/05 G-TGTT Bell 47G, Dewsbury – Devonshire Arms  
16/05 G-ETKT R.44, Barton – p/s 5 miles S of Sherburn  
16/05 N500SY MD-500E, Shoreham – p/s near Skipton  
16/05 G-IGGI Bell 505, Shoreham – p/s near Skipton  
17/05 M-ELIS Bell 407, Blackpool – Ravenworth, orbit over Richmond  
18/05 G-MOAL AW.109SP, p/s Coventry – Dronfield  
18/05 G-WECEG Twin Squirrel, Darwin – p/s Rotherham  
19/05 G-MSVI A.109S, f. p/s Knaresborough – Liverpool  
19/05 G-DCAM Twin Squirrel(Kingdom 07), p/s Seaham – p/s Knutsford  
20/05 G-GRZZ R.44, Bradford/East Bierley – p/s Halifax  
20/05 G-MCGE S-92(Coastguard 912), Uppermill – Sheffield N/G  
21/05 M-ELIS Bell 407, Blackpool – Ravensworth  
22/05 M-JCBC S-76C(JCB 3), Uttoxeter – Humberside  
23/05 ZB669 Gazelle(Armyair 736), Waddington – Catterick/Marne  
24/05 G-OCAF R.44, p/s near Redditch – Hollym  
25/05 G-FDHS AW.109SP, Luton – Whitby - Helmsley – Ripon  
25/05 G-XXED S-76C, Kensington – Oxenhope – Carr Gate  
26/05 G-XXED S-76C(Rainbow 1), LBA – Harewood House  
26/05 G-VOIP Gazelle, p/s Teesside – Devonshire Arms  
27/05 G-ELLI Jet Ranger, Turweston – p/s 5/W Harrogate  
27/05 G-ROMT R.44, P/S Ripon – p/s Stoke  
28/05 G-HSTI R.44, Leeds/East – Devonshire Arms  
30/05 ZK555 Chinook(Vortex 499), operating Donna Nook am  
30/05 G-IPGL AW.109SP, p/s Derwent Water – p/s Reading  
30/05 G-TSBY R.44, p/s Redcar – Denham

**CARR GATE:-** 3/5 G-POLA EC-135(Police 28) f/t Newcastle; 16/5 G-NICU AW.169(Helimed 80) f. Birmingham, refuel; 25/5 G-XXED S-76C f. Oxenhope, refuel;

**CONY PARK:-** On 19/5 Jet Ranger G-JTBX arrived from a private site in Ireland with the pilot returning home in Jet Ranger G-WIIZ, which had been in for some time on maintenance; 3/5 G-XITE Bell 505 f. Denham; OK-LTM R.44 f. Caistor n/s; G-TGTT R.44 f. Caistor f/t Caistor; 7/5 G-IOOK A.109E f. Sunningdale t. Ripon; 16/5 G-NELS R.44 f. Nottingham; G-RYFF A.109S(Castle 2; M-AWOL AW-119 f. Elstree; G-NIOG R.44 f. Denham; 17/5 G-LUGS A.109S f. Rufforth; 18/5 M-AWOL BK-117 f. Elstree t. Perth; 19/5 G-YBES EC.130 t. Denham; 20/5 G-TGTT R.44 f. Brighton(collect OK-LTM); G-MCLA R.44; 22/5 G-JORD R.44 f. Glenrothies; G-OAHL Twin Squirrel(Trident 3) f. Harrogate; 25/5 G-ILFF AW.109SP f. Teesside t. p/s near Lyneham; 24/5 G-NELS R.44 f. Nottingham;

**WALTON WOOD:-** 3/5 G-GSMR Jet Ranger f. Guisborough; G-ODHB R.44 f. Barton; G-OSPP R.44 f. Sleaf; 6/5 G-REYE R.44 t. Carlisle; 8/5 G-NIKL R.22B t. Barton; 17/5 G-EIZO EC.120 f. p/s Knutsford; 22/5 G-SPVK Squirrel(Fusion 1) f. Willaston;

**YORK RACE COURSE:-** 11/5 G-IOOK A.109S t/f Leeds/East; 17/05 G-DMPI A.109S f. Biggin Hill t. Leeds/East; G-HOLM EC-135(Woodstock 31) f. Oxford; N150SF Gazelle(Gold 01) f. p/s near Derby; 18/5 G-TAJB BK-117 f. Turton Golf Club; G-KLNH AW.109SP f. Newmarket t. Leeds/East; G-VGMC Twin Squirrel(Kingdom 06) f. Newmarket t. Leeds/East;

#### LOCAL AIRFIELDS

**BAGBY:-** On 10/5 Cessna F.172N PH-BIT arrived from Navan, Northern Ireland along with Robin DR.400 G-EYCO. On 1/6 the Robin was transferred to the Eire register and departed to "EIHH" on 18/5. 1/5 G-GSMR Jet Ranger t. Oulton Park; 2/5 G-REBB Rebel f/t Oxenhope; 3/5 G-OHRA Jabiru J.430 f. Tatenhill; 5/5 G-SENS EC-135(Woodstock 38) t. Oxford; 14/5 G-CCND RV-9A t. Blackbushe; 18/5 G-HSVI FR.172J f. Welshpool; 28/5 G-PPFS FRA.150L f. Brighton; 30/5 G-BKJW Aztec f. Halfpenny Green; G-HPSL Commander 114B f. Kemble; 31/5 G-GOES R.44 f. Nottingham;

**BEVERLEY:-** 1/5 G-FRYA R.44 f. Leicester; G-BTII AA-5 f. Leeds/East; G-LINJ R.44(Pipeline 83); 4/5 G-BCRR AA-5B f. Sherburn; 14/5 G-CLJU Wassmer WA-40 f/t North Coates; G-HELL Sonex f. North Coates; 17/5 G-XERO Sports cruiser f. Gamston; G-WIFE R.182 f. Lydd; 18/5 G-CKXM Eurofox f. Tarn Farm; 23/5 G-BNST C.172N f. Netherthorpe; 24/5 G-BTRS PA-28 f. Barton; 27/5 G-REMH Jet Ranger f. Costock; 27/5 G-BTJA Luscombe 8E f/t Barton; 28/5 G-INXS R.44 f. Sherburn t. Gamston; 29/5 G-TAPS PA-28RT f. Thurrock; G-ZERO AA-5B, G-OTEC Tecnam P-2002 f. Turweston;

**COAL ASTON:-** 4/5 G-MRKM Carbon Cub f. Dundee; 18/5 G-APFV Apache t. Inch;

**CONINGSBY:-** 3/5 ZH833 Merlin f. Boscombe Down;

**CROSLAND MOOR:-** 13/5 G-OJLD RV-7 f/t Sherburn; 20/5 G-AXNN Pup f. Tatenhill; G-CGLF Magni M16C, G-CGRZ Magni M24C f. Rednal; 28/5 G-CKXM Eurofox t. Tarnfield;

**DARLTON GLIDING SITE:-** A new resident here is 1943 vintage Slingsby T-65C G-DEGH, registered to local owners in Newark at the beginning of May.

**EAST KIRKBY:-** 1/5 G-BFCT TU.206F f. Bournemouth;

**EDDSFIELD:-** 3/5 G-CEFJ Sonex f. Temple Bruer; G-CKGJ Minstrel; G-CHOE DR.400 f. Blackpool; 13/5 G-PPFS FRA.150L f. Brighton; 25/5 N500SY MD.500 f. Shoreham t. Brighton; 31/5 G-EMHJ AW.109SP(Trident 3) f. Battersea;

**ELVINGTON:-** 17/5 G-GULP Sky Arrow f. Sleaf; 27/5 G-OATL A.109S f. Shoreham; 28/5 G-REMH Jet Ranger, local flights all day; 30/05 G-MFEF FR.172J f. Lee-on-Solent;

**ESHOTT:-** 11/5 G-EMHN A.109S(Costock 9) t. p/s near Connington; 21/5 G-OMAO TB-20 f. Shoreham; 26/5 G-BAXZ PA-28 f. Perth t. Sherburn; N4190W PA.46T Malibu, t. Teesside; 28/5 G-CFCI F.172N f. Derby; 30/5 G-DRCC Eurostar(local flights);

**FISHBURN:-** 19/5 G-IWAW R.66 f/t Tatenhill; 24/5 G-XLNT Zenair CH-601UL f/t Crosland Moor; G-GGEM PA-28 f. Beverley; 25/5 G-BSED PA-22 f. Sherburn t. Sleaf; 29/5 N1350J Commander 114 f. Tatenhill; 31/5 G-AHBM Hornet Moth

**FULL SUTTON:-** 19/5 G-BIEY PA-28 f. Derby; 27/5 G-JACA PA-28 t. Denham; 28/5 N3544M PA-31 f. Peterborough;

**GAMSTON:-** 1/5 N1724D SR-22 f. LBA; 3/5 G-TOOO Cabri G.2 f. Tatenhill; 6/5 9H-DGN DA-42(Blue Knight 57) f. Lyon/Bron; 8/5 G-BKCE F.172P f. Leicester; 13/5 G-WEAT R.44 f. Nottingham; G-HENZ Cavalon; 17/5 G-LROK R.66 f. Watton; 18/5 G-TAMS A.23 Musketeer f. Abbotts Bromley; 20/5 G-SBRK Aero AT-3 f. Sywell; G-RBHB Ikarus C-42 f. Northrepps; G-BZGT Jabiru f. Tollerton; 21/5 G-CTSO DA-40NG f. Oxford; 23/5 G-CMLX Skyranger f. Landmead Farm; G-KNYT R.44 f. p/s in Cheshire; 25/5 G-HUXX MD.369E t. p/s Edinburgh(Also 26/5 f. Cumbernauld); N95GT SR-22GT f. Lydd; G-MOFO F.172M f. Newcastle; G-GBRB PA-28; G-BZPG Sundowner f. Fenland; 27/5 G-COVA PA-28 f/t Coventry; 28/5 G-NWFS C.172P f. Hawarden; 29/5 N113BP PA-46T f. Wickenby;

**LANGAR:-** 15/5 N2530K Cessna 180K t. Darley Dale;

**LEEDS/BRADFORD:-** Old faithful Dauphin G-CGGD left today on the first leg of its delivery flight to new owners in France. Another long term resident of the Multiflight/West hangar, Dauphin G-OLNT, which was officially de-registered as permanently withdrawn from use on 9/2/2023 left by road on 16/5. PC-12 G-SPEN, which was a recent new arrival for a Leeds owner has now been re-registered N21WL for Adams Aviation Inc. Hield's PA-28 G-BZLH has been re-registered in Malta and sold to new owners Dubai. Both have left and no longer resident. A potential new resident is Praetor G-HAPA(ex G-RORA) which will replace Phenom G-HNPN with Harpin.

**LEEDS/EAST:-** 1/5 G-DONE Bell 505 f. Sleaf; 2/5 G-KLNM Squirrel f. Croft; 3/5 G-MFLT Dauphin f. Birmingham; N240LG Falcon 900EX f. Farnborough; N249CG Beech A.36 f. Blackbushe; G-JRER P.2006T t. Aberdeen; M-IRTH PC-12 f/t Fairoaks; 5/5 G-KLNM Squirrel(Saxonair 12) f. Norwich; G-BXEX PA-28 t. Tollerton; 11/5 G-ILOOK A.109S t. York Race Course; 13/5 G-HEDL Extra 300 f. Wombledon; 14/5 EI-JIA King Air 200 f. Bournemouth; G-EKHW PA-28RT f. Chester; G-BSYV C.150M f. Sandtoft t. Leicester; G-TEMU SR-22T f. Oxford; 15/5 G-TCHI Spitfire. G-BYKP PA-28RT f. Lee-on-Solent; G-GDRV RV-6 f. Gloucester;

G-MOAL A.190S; G-OLCP Twin Squirrel(Kingdom 03) t. Knutsford; 16/5 G-JWRN R.44 t. Newcastle; G-UKPA Cessna 208 f. Peterborough; M-POWR King Air C.90 f. Exeter; 17/5 G-IMIK PA-28 f. Sandtoft t. Cumbernauld; 2-MSTG Citation Mustang f. Southend; G-DMPI A.109S f/t York R/C; G-BTAL F.152 f. Shobdon; 18/5 G-LEEG C.182Q Easter Netha Cabra Farm; G-BBxB FRA.150L f. Sleaf; G-KLNH AW.109SP f/t York Race Course; G-BXIF PA-28 f. Barton t. Cardiff; 19/5 G-JMAW King Air 200GT(Chalgrove 02) f. Chalgrove; G-IDFE Bell 505 f. Denham; G-CLLR PA-28 f/t Elstree; 20/5 M-IRTH PC-12 f. Fair Oaks; G-DAVO AA-5B; OO-NZV Robin DR.400 f. Duxford; 21/5 N210GL Beech 1900D(Delivery); G-BFZB/480723 J3C Cub; 22/5 N850BL TB-860 f. Jersey; HB-YSI RV-14 f. Rochester; 23/5 PH-TXA Citation Mustang f. Amsterdam; EJ-VAIS PC-12(Rocky 707G) f. Wroclaw; 24/5 G-RVWJ RV-9A. G-PTEK RV-9A f. Blackpool; EJ-AAA PC-12 f. Gloucester; G-NJAA Citation XL(Artisan 130R) f. Biggin Hill; 26/5 G-CYFR PA-46 f. Liverpool; G-RACY C.182S f. Fowlmere; N677CD SR.22 f. Fair Oaks; N669MA SR.22; N899JH C.182T f/T Oban, n/s; G-BNIV C.152 f. Gloucester; 27/5 CS-PHQ Phenom(Fraction 168E) f. Munich; G-KION Citationjet(Apex 963N) f. Bournemouth; N57DC SR-22 f. Charterhall; 28/5 G-JAYD Europa f. Rayne Hall Farm; G-ELCH Commander 114B f. Blackbushe; 30/5 G-OOWS Squirrel f. High Wycombe;

**LEEMING:-** 9/5 131/XQ TBM-850 French Air Force(CTM 3831) f. Orly; 19/5 G-MOAL AW.109SP(Ascot 1223) f. High Wycombe; 22/5 ZZ176 C-17B(Ascot 6714) f. Brize Norton; ZM405 A.400M(Blenheim) f. Lossiemouth; 24/5 ZK031 Hawk(Obi 1); G-ZAHS Falcon 900EX(Ascot 1930) f. Northolt; 25/5 G-781 C-130J(Netherlands Air Force 77) f. Eindhoven;

**LINTON-ON-OUSE:-** On 5/3 A.400M ZM405(Grizly 493) carried out a low fly-by down the disused runway here.

**MT AIREY:-** 13/5 N761JU T.210M F. Sturgate;

**NETHERTHORPE:-** 10/5 G-BIZG F.152 f. Leeds/East; 15/10 G-HTFU Airvan f. Grindale; 20/5 N673SA PA-24 f. Great Massingham; 20/5 G-NCLA RV-12 f. Rochester; 22/8 G-BMKD PA-28 f. Leeds/East; 23/5 G-HTFU Airvan f. Grindale; 24/5 G-TYKE Jabiru f. Otherton; G-VAZE R.44 f. Clay Cross; 25/5 G-BXIM Chipmunk f. RAF Halton; 27/5 N98712 J-3C Cub f. Brighton;

**NORTH COATES:-** 1/5 G-CDDS CH-601D f. Tatenhill; 14/5 G-AXAT D.117A f. Rufforth; 17/5 G-SAUL HR.200; 20/5 G-CGIP Sportsruiser f. Barton; G-AVWA PA-28 f. Tibenham; G-CKMX RV-7, G-CLDV Cavalon f. Felthorpe; 21/5 G-CYLL Falco f. Sherburn; G-DIYA Sling 4; G-CFUE Pioneer 300; G-BHZV Jodel D.120A; G-BHBG PA-32R; G-RSKY Skyranger; G-CMMW Deltajet 500; G-IIHX Midget Mustang; G-RVAW RV-6; G-MESH Sportsruiser; G-AYGA Jodel D.117A; G-CFUE Pioneer 300; N7954J PA-28R; 26/5 D-MTYP Bristell UL, D-MYHI Remos G-3 Mirage, D-MODL WT-9 Dynamic all from Calais; 28/5 G-CCTE MCR-01 f. Knettishall;

**PETERLEE:-** 8/5 G-GEFF PC-13 f. Bagby; 20/5 N715BC Beech A.36 f. Elstree; 27/5 G-DMCP Tecnam P-2008 f. Henstridge; 27/5 G-ATPT C.182J f. Elstree;

**RUFFORTH:-** 1/5 G-KNCG PA-32 t. Norwich; 17/5 G-LUGS A.109S f. Battersea t. Coney Park; 21/5 G-CHGA Quik GTR, G-FFFB Quik GTR f. Over Farm; 23/5 G-TSHO Ikarus C-42 f. Sherburn; 29/5 G-CIRT Mtosport f. Kirkbride;

**SHERBURN:-** Saturday 20/5 was Air Race day and the following were noted on Flightradar taking park – G-AZHH Cavalier; G-BARC FR.172J; G-BXTS Katana; G-FIAT PA-28; G-GOSL DR.400; G-JAJB AA-5B; G-TNGO RV-6; N75CE Christen Eagle; N200GK PA-28R; 1/5 G-SIBK Beech A.36 f. Gamston; 2/5 G-BTGY PA-28 f. Stapleford; 3/5 G-SCPI Sportscruiser f/t Barton; G-FXBA Foxbat f. Finmere; 7/5 G-BBKA F.150L t. Beverley; G-GURU PA-28 f. Barton; 8/5 G-WAIR PA-32R f. Wroot; 10/9 G-IMAB Europa f. Fosterton Greenfield; G-BNST F.172N f. Netherthorpe; 12/5 G-TOTN C.210M f. Isle of Man(LBA divert); 13/5 G-BNKE PA-28 f. Leicester; G-MAXD R.44; G-AKVO Taylorcraft BC-12D f. Netherthorpe; 14/5 G-SAAA CTSW f. Crosland Moor; G-CSCS F.172N t. Eddsfield; 15/5 G-ETKT R.44 f. Denshaw; 16/5 G-JONL Sportscruiser f. Fishburn; G-CTNG SR.22; G-KOKO SR-22; 18/5 G-JAYK R.44 f. Gloucester; G-BOJM PA-28; HB-SGD DA-40; HB-SGV DA-40; HB-PMT PA-28; HB-PIV PA-28; 19/5 G-BPGU PA-28 f/t Tollerton; 19/5 G-BMIV PA-28 f. Earls Colne; G-DAVM CAP.10B f. Goodwood; G-DUDZ DR.400 f. Edington; G-RVNS f. Popham; G-ACMA Leopard Moth; 20/5 G-NNAC PA-18 f. Beckwithshaw; 23/5 G-TSHO Ikarus C-42 f. Little Gransden t. Rufforth; G-XTRA Extra EA.230 f. Netherthorpe; 24/5 G-RATV PA-28RT f. Fair Oaks; 25/5 G-CFTZ Eurostar f. Barton; N89GH SR-22 f. Stapleford; G-DMCP Tecnam P-2008 f. Aberdeen; G-OMAS A.150M f/t Teesside; G-BSED PA-22 f. Sleaford; G-CEUU R.44 f. p/s near Malvern; 26/5 G-KNEK Grob 109B t. Currock Hill; G-GIGZ RV-8 f. White Waltham; G-NWFC C.172P f. Liverpool; G-BSVB PA-28 f. Blackpool; G-JUNR Bolkow Junior; G-CCPF Skyranger f. East Fortune; G-OSAI PA-28 t. Hawarden; G-BNZB PA-28 f. Gloucester; 27/5 G-SJMW SD-1 Minisport f. p/s Scotland; 27/5 G-CINX RV-7 f. Barton; 29/5 G-DHOP RV-9A f. Ronaldsway; G-CRZA Sportscruiser f. Tatenhill; 30/5 G-MFEF FR.172J f. Elvington;

**SKEGNESS:-** 1/5 N33NW TB-20 f. Tollerton; 3/5 G-NDPA C-42. G-CILT C-42 f. Boston; G-CCGL TB-20 f. Chatteris; 20/5 N747MM PA-28R f. Denham; G-HORK Pioneer 300; G-BYIK Europa; G-ARYS C.172C; G-BWPH PA-28 f. Oxford; G-SELL DR.400 f. Tatenhill; G-BMMK C.182P; 21/5 G-SSWV RF-5B f. Pocklington; 24/5 G-CHMW Eurostar f. Husband Bosworth; G-BCRB F.172M f. Seething; 25/5 G-BCRR AA-5B f. Sherburn; G-OBJM Taylor Monoplane; G-CJRZ Ikarus C-42 f. Beeches Farm; 26/5 G-RRVX RV-10 f. Nottingham; G-BFRR FRA.150M f. Tatenhill t. Sherburn; 27/5 G-CMEE Ikarus C-42 f. Sleaford; G-ASUD PA-28f. Andrewsfield; G-MVFO Thruster TST; G-PATJ Ikarus C-42; G-CLZW Sherwood Ranger; G-YRAX Magni M24C;

**WADDINGTON:-** 8/5 ZM707 Apache(Ambush 01) Spadeadam – Wattisham; 21/5 103 Xingu(Cotam 1750); 23/5 ZB669 Gazelle(Armyair 736); 25/5 ZZ178 C-17B(Ascot 6712) f. Brize Norton;

**WICKENBY:-** 1/5 G-IIFM Edge 360 f. Leicester; G-HAYE CAP.232 f. Fowlmere; 3/5 G-ARNJ PA-22 f. Sleaford; G-CCVM RV-7 f. Woodvale; 13/5 G-BTII AA-5 f. Leeds/East; 16/5 G-OERS C.172N; 17/5 G-BSED PA-22 t. Sleaford; 24/5 G-BXVO RV-6A f. Sleaford; 26/5 N955SH PA-46T Malibu; G-OVLS Velis Electro f. Humberside;

**WOMBLETON:-** 2/5 G-BWGO T-67M f. Swansea; 24/5 G-HDEW PA-32R f/t LBA; G-JAFS PA-32R t. LBA; 26/5 N424AG Cessna 208B f. Denham; 29/5 G-IIXA XA.41 f. Barton;



**May 2023**

Nearly 400 movements to report on this month plus a residents update from Ian Gratton, We laso have a new type in the Kodiak 100 on the 17<sup>th</sup>, It's a modern single engine turboprop, medium range with STOL performance carrying up to 10 people or 1.5 tonnes of cargo.

Residents update:

**G-BZLH** PA-28 sold by Hields Aviation to an owner in Dubai and registered 9H-???

**G-SPEN** sold and now registered N21WL, left LBA 18May23, only arrived 22Jan23

**G-HAPA** Embraer 550 Legacy 500 Centreline Aviation arrived 20 Jun 23, aircraft used to be G-RORA at one time, This appears to be in addition to G-HNPN, certainly at the moment anyway.

**G-BXWB** Robin HR100, noted this a couple of times recently in the Multiflight West hanger and appears to have returned from Sherburn, but not confirmed

**Monday 1<sup>st</sup> May 16:19**

Gulfstream G200 **M-GZOO** dep 11:58 to Palma, Cessna 560 Excel **G-NJAB** arr 16:19 fr Inverness dep 16:49 to Biggin Hill, Beechjet 400 **SP-TAT** arr 18:35 fr Palma n/stop, Challenger 350 **9H-VCV** arr 22:07 fr Palma dep 22:50 to Luton,



G-IASM Beech200 Kingair 01/05 Mike Storey

**Tuesday 2<sup>nd</sup> May**

Hawker 800XP **N535RV** arr 07:51 fr ST Johns until 4<sup>th</sup>, PA-28R Cherokee Arrow **G-AZFM** arr 10:34 fr Thruxton until 4<sup>th</sup>, Beech200 Kingair **G-IASM** dep 10:51 to Humberside, R/C F172 **G-AWVA** arr 15:01 fr Barton n/stop, Beech 200nKingair **G-REXB** f/t Jersey (15:51/ 16:20), Beechjet 400 **SP-TAT** dep 17:47 to Luton. PA-28 Cherokee **G-AWBS** 2 x ILS approach at 17:51 fr Sherburn

**Wednesday 3<sup>rd</sup> May**

Cessna 560 Excel **D-CRTP** arr 08:50 fr Luton dep 10:13 to Palma, Cessna 560 Excel **D-CAHO** arr 09:27 fr Hamburg dep 15:04 to Amsterdam, Slingsby T67M **G-BUJJ** ILS approach at 11:33 fr Full Sutton, Beech 200 Kingair **G-PCOP** f/t Glasgow (11:41/14:23), Beech 200 Kingair **G-REXA** arr 15:34 fr EMA dep 17:12 to Jersey.

### Thursday 4<sup>th</sup> May

Cessna 560 Excel **EJ-PRLN** arr 07:43 fr Belfast dep 08:20 to Newquay ret LBA at 15:27 fr Belfast n/stop, PA-28R Cherokee Arrow **G-AZFM** dep 08:29 to Thruxton, Cessna 550 Bravo **G-CMBC** arr 08:55 fr Bournemouth dep 11:53 to Manchester, Beech 200 Kingair **G-REXB** arr 10:08 fr Jersey dep 10:27 to Shoreham, Cirrus SR20 **G-GCDA** f/t Tatenhill (11:20/13:36), EV-97A Eurostar **G-TIVV** arr 14:44 fr Perth dep 16:33 to Sherburn, Cessna 560 Excel **G-NJAA** arr 14:59 fr Farnborough n/stop, Hawker 800XP **N535RV** dep 16:43 to Keflavik, BN-2B-26 Islander **G-HEBS** arr 19:12 fr North Connel n/stop.

### Friday 5<sup>th</sup> May

Cessna 560 Excel **G-NJAA** dep 09:35 to IOM, Challenger 350 **9H-VCE** arr 11:25 fr Farnborough dep 12:30 to Orleans, Learjet 45 **M-ABJA** f/t Stansted (11:32/12:23), Beech 350 Shadow **ZZ504** ILS approach at 12:32 fr Waddington, BN-2B-26 Islander **G-HEBS** dep 13:02 ret 13:32 & dep 13:33 to Humberside ret LBA at 15:11 & dep 15:23 ret at 15:35 n/stop, Cessna 560 Excel **EJ-PRLN** dep 14:23 to Newquay, PA-28 Cadet **G-SACS** touch & go at 15:27 fr Sherburn,

### Saturday 6<sup>th</sup> May

BN-2B-26 Islander **G-HEBS** dep 10:40 ret 11:56 n/stop, Cessna 525 CJ M2 **G-OREZ** f/t Valencia (12:18/13:17), Challenger 605 **9H-VFJ** arr 17:13 fr Orleans n/stop, Challenger 350 **9H-VCQ** arr 17:33 fr Le Bourget dep 18:37 to Farnborough,

### Sunday 7<sup>th</sup> May

Cessna 510 Mustang **OE-FZA** arr 08:42 fr Luton dep 09:52 to Avignon, Agusta A109S Grand **G-JMBS** arr 09:02 dep 09:50 to Battersea, Falcon 50EX **N916KP** arr 09:44 fr Bangor until 11<sup>th</sup>, Challenger CL605 **9H-VFJ** dep 11:42 to Bilbao, Phenom 300 **F-HLRS** arr 12:36 fr Venice dep 16:31 to Rome, Cessna 560 Excel **CS-DQA** arr 17:10 fr IOM n/stop, Gulfstream G200 **M-GZOO** arr 18:37 fr Palma n/stop,

### Monday 8<sup>th</sup> May

Global Express **C-GLXM** arr 08:53 fr Toronto until 11<sup>th</sup>, Cessna 560 Excel **D-CSMC** arr 09:33 fr Brussels dep 11:21 to Dusseldorf, Gulfstream G200 **OY-IUV** arr 09:47 fr Poznan dep 10:52 to Las Palmas, Cessna 560 Excel **CS-DQA** dep 10:11 to Bern, Diamond Da-62 **M-ARKS** t/f IOM (12:13/12:30), Cessna 550 Citation II **D-CHZF** arr 12:59 fr Cagliari dep 16:19 to Innsbruck,

### Tuesday 9<sup>th</sup> May

Hawker 400XP **N719EL** arr 08:28 fr EMA dep 09:03 to Vienna, Phenom 300 **2-EMBR** arr 10:22 fr Nice dep 10 :54 to Faro, Pilatus PC-24 **D-CMSL** arr 10:31 fr Stansted dep 11:27 to Geneva, Beech 350 Shadow **ZZ419** ILS approach at 11:23 fr Waddington, Cirrus SR22 **N322JR** dep 11:31 to Blackpool, PA-28R Cherokee Arrow **G-AZFM** arr 14:59 fr Thruxton n/stop, Beech 200 Kingair **G-CIFE** arr 16:58 fr Humberside n/stop, Eclipse EA550 **2-MUJJ** arr 18:58 fr Bournemouth n/stop, Typhoon FGR4 **ZK329** low pass at 19:22 fr Conningsby c/s TYP308, Beech 200 Kingair **G-SASC** f/t Glasgow (21:23/23:21).

### Wednesday 10<sup>th</sup> May

AS365 Dauphin **G-CGGD** dep 07:13 to Le Touquet, PA-28 Cherokee **G-AYPV** arr 08:19 fr IOM ret at 17:26, Socata TBM910 **D-FFUN** arr 08:43 fr Munster n/stop, R/C F172 Skyhawk **G-YBAA** arr 09:17 fr Sandtoft dep 10:39 to Belfast, Eclipse EA550 **2-MUJJ** dep 10:17 to Aalborg, Learjet 40 **M-DMDP** arr 15:08 fr Dublin n/stop, Phenom 300 **CS-PHD** arr 16:38 fr Grenoble n/stop, Praetor 600 **9H-IFX** arr 16:46 fr Rome n/stop, Cessna 560 Excel **D-CSMC** arr 19:11 fr Dusseldorf n/stop.

### Thursday 11<sup>th</sup> May

Phenom 300 **CS-PHD** dep 06:57 to Cannes, Socata TBM 850 **F-HRCN** f/t Laval (07:28/ 08:21), Learjet 40 **M-DMDP** dep 07:50 to Dublin, Beech 200 Kingair **G-REXB** arr 11:14 fr Jersey dep 12:17 to EMA, Praetor 600 **9H-IFX** dep 12:11 to Cambridge, Falcon 50EX **N916KP** dep 12:21 to Shannon, Global Express **C-GLXM** dep 13:38 to Birmingham, Cessna 560 Excel **D-CSMC** dep 14:25 to Farnborough, Cessna 525 CJ1 **G-SOVH** arr 15:46 fr Bergen n/stop, Socata TBM910 **D-FFUN** dep 16:21 to Munster, PA-28R Cherokee Arrow **G-AZFM** dep 17:24 to Thruxton, Socata TBM700 **F-RAXO** (125/65-XO) Fr/ Air Force f/t Velizy (21:48/22:28).

### Friday 12<sup>th</sup> May

Cessna 525CJ1 **G-SOVH** dep 08:36 to Le Mans, Socata TBM850 **F-HRCN** arr 10:28 fr Rotterdam dep 14:50 to Laval, Hawker 900XP **OK-HWL** arr 14:08 fr Malaga dep 15:10 to Farnborough, Cessna 550 Bravo **G-IPLY** arr 14:44 fr Lydd n/stop, phenom 300 **CS-PHL** arr 19:32 fr Bordeaux n/stop, eurocopter EC135 **G-TVHB** arr 10:01 n/stop.

### Saturday 13<sup>th</sup> May

Beech 200 Kingair **2-FIFI** arr 10:12 fr Jersey n/stop, Cessna 560 Excel **G-NJAC** arr 10:42 fr Gatwick dep 11:28 to Inverness, Phenom 300 **CS-PHL** dep 12:56 to Oxford. Legacy 500 **G-TULI** arr 13:15 fr Biggin Hill n/stop, Legacy 500 **9H-XFX** arr 14:28 fr Tenerife n/stop, Hawker 400XP **N719EL** arr 16:24 fr Vienna dep 16:36 to EMA, Cessna 550 Bravo **G-IPLY** dep 18:07 to Lydd, Learjet 45XR **G-OSRL** arr 18:52 fr Biggin Hill n/stop.

### Sunday 14<sup>th</sup> May

Legacy 500 **G-TULI** dep 06:17 to Napoli, Hawker 800XP **LY-HCW** arr 07:42 fr Barcelona dep 09:15 to Faro, Legacy 500 **9H-XFX** dep 11:33 to Firenze, Learjet 45XR **G-OSRL** dep 12:06 to Santiago, Global Express **C-GLXM** arr 12:08 fr Venice n/stop, Cessna 560 Excel **D-CAWP** arr 13:15 fr EDI dep 15:49 to Hannover, Cessna 525 CJ1 **D-ICEE** arr 14:97 fr Schonefeld dep 16:32 to Torino, Cessna 182T Skylane **G-SHAR** arr 14:18 fr Old Buckenham n/stop, Cirrus SR22 **N57DG** arr 14:21 fr Elstree ret at 17:46, Challenger 350 **9H-VCM** arr 14:33 fr Malaga dep 16:16 to Stansted, Socata TBM930 **N11MA** arr 16:21 fr Lydd n/stop, Beech 200 Kingair **2-FIFI** dep 16:52 to Jersey, Beech 200 Kingair **G-FLYK** arr 17:11 fr IOM dep 17:41 to Haverfordwest, Cessna 525A CJ2 **G-NOCM** arr 17:39 fr Oxford dep 18:41 to Farnborough, Cessna 525 CJ1 **G-SOVH** arr 17:49 fr Le Mans dep 18:58 to Biggin Hill, Learjet 45 **LX-RSQ** arr 20:00 fr Liege n/stop.



G-SHAR Cessna 182T Skylane 16/05 Mike Storey

### Monday 15<sup>th</sup> May

Learjet 45 **LX-RSQ** dep 13:45 to Luxembourg, Global 6000 **9H-VJI** arr 18:28 fr Farnborough n/stop, PA-28 Cadet **G-LORC** arr 20:20 fr Shoreham n/stop,

### Tuesday 16<sup>th</sup> May

Legacy 600 **D-AEOT** arr 08:30 fr Luton dep 10:13 to Nice, BE95-55 Baron **N567JL** arr 09:50 fr Deauville ret at 10:47, Gulfstream 600 **N70EL** arr 10:34 fr Farnborough ret at 17:03, PA-28 Cadet **G-LORC** dep 11:13, Diamond DA50 **G-OUTY** 2xILS approach at 11:46 fr Church Fenton, Global 6000 **9H-VJI** dep 12:38 to Orlando, Cessna 182T Skylane **G-SHAR** dep 13:01 to Old Buckenham, BAE Hawk MK167 **ZB132** low pass at 14:45 fr Leeming c/s LEE21, Cessna 525A CJ2 **D-ICMD** arr 23:10 fr Manchester n/stop,



G-LORC PA-28 Cadet 16/05 Mike Storey



ZB132 Hawk T2 Qatari RAF 16/05 Paul Whincup

### Wednesday 17<sup>th</sup> May

AS365 Dauphin **EI-PRO** arr 08:19 dep 16:45 to Inverness, Beech 200 Kingair **G-OLIV** arr 09:01 fr Bournemouth ret at 16:15, Cessna 182 Skylane **G-MRMA** arr 09:26 fr Cranfield dep 10:22 to Bagby, Cessna 560 Excel **D-CAWP** arr 10:35 fr Hannover dep 15:08 to EDI, Grob G120TP Prefect **ZM314** f/t Cranwell (11:50/14:54), Grob G120TP Prefect **ZM315** f/t Cranwell (12:09/14:43), Hawker 900XP **TC-DIO** arr 13:16 fr Kosovo n/stop, Kodiak 100 **N133KQ** arr 16:11 dep 17:10 to Cranfield, Global Express **TC-ACN** arr 16:28 fr Istanbul n/stop, Challenger 850 **TC-GHP** arr 17:58 fr Istanbul n/stop, Cessna 525A **D-ILWP** arr 19:17 fr Eindhoven n/stop.

### Thursday 18<sup>th</sup> May

Global Express **TC-ACN** dep 00:46 to Istanbul, Cessna 210 Centurion **EI-BUF** arr 08:06 fr Abbyshrule dep 09:51 to Bournemouth, Phenom 300 **D-CBBS** arr 09:07 fr Brussels dep 11:34 to Nice, Challenger 850 **TC-GHP** dep 09:30 to Istanbul, Grob G120TP Prefect **ZM312** f/t Cranwell (09:36/11:17), Cessna 525A **D-ICMD** dep 10:00 to Biggin Hill, Hawker 900XP **TC-DIO** dep 10:06 to Biggin Hill ret LBA at 12:13 & dep again to Biggin at 12:35, Cessna 525A CJ2 **D-ILWP** dep 13:08 to Eindhoven, Cessna 560 Excel **D-CJMK** arr 13:15 fr Dublin n/stop, Cessna 182S Skylane **G-ZINC** arr 13:19 dep 15:02 to Blackpool, Phenom 100 **ZM335** ILS approach at 13:34 fr Cranwell, Pilatus PC XII **G-FITC** arr 15:50 fr Elstree n/stop, Global 7500 **9H-VIR** arr 21:23 fr Toronto n/stop.

### Friday 19<sup>th</sup> May

Phenom 100 **D-IAAY** arr 07:12 fr Rotterdam dep 08:20 to Amsterdam, Pilatus PC XII **G-FITC** dep 09:37 to Coventry ret LBA at 1:16 & dep 11:52 to Elstree, Cessna 560 Excel **D-CJMK** dep 10:00 to Luton, Phenom 300 **G-NHHG** arr 10:53 fr Glasgow dep 11:36 to Vienna , Global 7500 **9H-VIR** dep 11:20 to Orlando, Phenom 300 **CS-PHS** arr 12:10 fr Northolt dep 13:29 to Faro, Global Express **C-GLXM** arr 14:10 fr Toronto n/stop. Hawker 850XP **M-ARIE** arr 15:32 fr Guernsey n/stop, Beech 200 Kingair **G-CIFE** arr 18:05 fr Newcastle n/stop

### Saturday 20<sup>th</sup> May

Hawker 850XP **M-ARIE** dep 10:48 to Guernsey, PA-28 Archer **G-BPTE** f/t Oxford (13:16/15:31),

### Sunday 21<sup>st</sup> May

Aero Commander AC114B **2-LAND** f/t Guernsey (10:56/11:52), legacy 500 **G-TULI** arr 14:35 fr Napoli n/stop, Cessna 525A CJ2 **D-ICMD** arr 15:00 fr Aalborg n/stop, Learjet 45XR **G-OSRL** arr 16:52 fr Santiago dep 17:44 to Manchester.

### Monday 22<sup>nd</sup> May

Cessna 560 Excel **D-CRON** arr 08:28 fr EDI dep 09:10 to Faro, Phenom 300 **D-CMMP** arr 09:33 fr Geneva dep 11:48 to Cannes. Cirrus SR22 **N590CD** dep 10:33 to Sherburn, Legacy 500 **G-TULI** dep 13:27 to Birmingham. Cirrus Sr22 **2-FFLY** arr 15:29 n/stop, Cirrus SR22 **G-PFLY** arr 15:38 dep 16:21 to Carlisle,



CS-PHQ Phenom 300 23/05 Mike Storey

### Tuesday 23<sup>rd</sup> May

Pa-28R Cherokee Arrow **G-AZFM** arr 08:26 fr Thruyton n/stop, Global Express **C-GLXM** arr 08:43 fr Toronto n/stop, Phenom 300 **CS-PHQ** arr 09:44 fr London City dep 13:35 to Palma,

Pilatus PC-24 **D-CVMS** arr 11:06 fr Le Bourget dep 12:07 to Cannes, Beech 200 Kingair **G-WVIP** arr 11:16 fr Exeter n/stop, Beech 200 Kingair **G-CIFE** dep 11:24 to Sywell ret LBA at 19:29 n/stop, Fuji FA200 **G-BBRC** ( I was lucky enough to get a flight on this aircraft from Fairoaks many moons ago) arr 11:54 fr Blackbushe, ret at 15:56, Cirrus Sr22 **G-GCVV** arr 14:43 fr Liverpool dep 17:03 to Birmingham,

### Wednesday 24<sup>th</sup> May

Cessna 210 Centurion **EI-BUF** f/t Abbyshrule (08:11/09:46), Beech 200 Kingair **G-PCOP** arr 09:44 dep 10:19 to Norwich ret LBA at 15:44 & dep 16:10, PA-28 Warrior **G-BOER** arr 10:04 fr Bagby dep 10:31 to Hawarden, Global 6000 **9H-VJU** arr 10:36 fr Dublin dep 11:30 to Nice, Cessna 510 Mustang **OE-FAT** arr 12:12 fr Venice dep 12:57 to Biggin Hill, Cirrus SR22 **N322JR** arr 13:39 fr Nottingham ret at 16:03, Phenom 300 **CS-PHT** arr 16:01 fr Schonefeld n/stop, Cessna 560 Excel **D-CHDJ** arr 16:46 fr Faro dep 17:24 to Siegerland, Learjet 45 **OO-MED** arr 17:55 fr Southend dep 18:43 to Liege

### Thursday 25<sup>th</sup> May

Phenom 300 **CS-PHT** dep 08:23 to Cannes, Cirrus SR20 **N203CD** arr 09:15 fr Liverpool, ret at 16:10, Phenom 300 **CS-PHA** arr 09:35 fr Geneva ret at 11:47, Learjet 40 **M-DMDP** arr 09:37 fr Dublin ret at 17:22, PA-28 Cadet **G-SACR** touch & go at 11:25 fr Sherburn, Cessna 525A CJ2 **D-ICMD** dep 13:56 to Teesside, Beech 200 Kingair **G-WVIP** dep 41:21 to Exeter, Sikorsky S-76C **G-XXED** arr 14:56 n/stop, Cessna 560 Excel **D-CSCE** arr 16:37 fr Nice dep 17:19 to Luton, PA-28R Cherokee Arrow **G-AZFM** dep 16:55 to Thrupton. Cessna 172 SkyHawk **G-MOFO** arr 17:27 fr Gamston dep 18:17 to newcastle, PA-28RT Turbo Arrow **G-RCMP** arr 17:40 fr Blackbushe n/stop, Diamond Da62 **G-IRJE** arr 17:43 fr Gamston, n/stop, Global express **C-GLXM** dep 17:49 to Farnborough, Cessna 525A **D-IAKN** arr 18:43 fr Dortmund n/stop, Gulfstream 650ER **N232G** arr 20:39 fr Teesside n/stop,



N232G Gulfstream 650ER 26/05 Paul Whincup

### Friday 26<sup>th</sup> May

Cessna 560 Excel **OE-GHB** arr 07:42 fr Altenrhein dep 08:58 to Ibiza, Sikorsky S-76C **G-XXED** dep 08:52, Cessna 510 Mustang **OE-FZA** arr 09:25 fr London City dep 10:09 to Le Bourget, Cessna 560 Excel **9H-XOA** arr 10:30 fr Le Bourget dep 12:09 To Malaga, Beech 200 Kingair

**G-FLYK** arr 11:28 fr IOM dep 11:55 to Oxford., Cessna 525A CJ2 **D-IAKN** dep 13:04 to Amsterdam. Praetor 600 **D-BOSS** arr 13:46 fr Le Bourget dep 15|13 to Palma. Gulfstream 650ER **N232G** dep 14:42 to San Jose, PA-28RT Turbo Arrow **G-RCMP** dep 15:15 to Blackbushe, Legacy 650 **D-ATOP** arr 17:15 fr Cannes n/stop, Cessna 680 Sovereign **OK-UGJ** arr 17:19 fr Prague dep 18:10 to Faro, Cessna 560 Excel **D-CSCE** arr 17:25 fr Sylt n/stop, Cessna 525B CJ3 **D-CSCA** arr 18:04 fr Faro n/stop, Global 6000 9H-VJN arr 19:55 fr ST louis dep 20:57 to Luton. Challenger 850 **9H-AMY** arr 20 :04 fr Kirkenes m/stop,

### Saturday 27<sup>th</sup> May

Cirrus SR22 **N575PW** arr 07:39 fr Blackpool n/stop, Cessna 182 Skylane **G-ARAW** f/t Blackpool (07:42/08:01), Cessna 560 Excel **D-CSCE** dep 09:06 to Geneva Legacy 650 **D-ATOP** dep 09:21 to Pisa, Challenger 850 **9H-CLG** arr 10:23 fr Nice dep 13:35 to Ibiza, Cessna 525A CJ2 **D-IAKN** arr 11:01 fr Marseille n/stop, Challenger 850 **9H-AMY** dep 11:10 to Heraklion, PA-28 Dakota G-ODAK arr 11:16 dep 13:24. Cessna 525B CJ3 **D-CSCA** dep 13:21 to Dundee, Cessna 525 CJ1 **F-HRIB** arr 15:31 fr Le Bourget deep 16:38 to Nice, Boeing 737-76N **G-NEWG** arr 16:36 fr Stansted dep 17:37 to Marrakesh,

### Sunday 28<sup>th</sup> May

Phenom 300 **CS-PHI** arr 09:36 fr Stansteddep 11:04 to Palma., Mooney M20J **G-BJHB** arr 10:34 fr Blackbushe. Ret at 14:58, Global 6000 **CS-GLH** arr 11:31 fr Nice n/stop, Cessna 560 Excel D-CJMK arr 13|:34 fr Derry n/stop, Mooney M20J **G-BJHB** dep Blackbushe, Cessna 525A CJ2 **D-IAKN** dep 15:23 to Dortmund, Cessna 510 Mustang **PH-TXA** arr 18:26 fr Amsterdam, dep 19:44 to Rotterdam, Booeing 737-76N **G-NEWG** arr 18:35 fr Dublin dep 20:54 to Stansted,

### Monday 29<sup>th</sup> May

Cessna 560 Excel **D-CJMK** dep 10:22 to Malaga, Beech 200 Kingair **G-CWCD** arr 11:14 fr EMA dep 12:41 to IOM, Cessna 680A Latitude **N522QS** arr 11:33 fr Geneva dep 12|:25 to Santa Cruz, BN-2T turbo Islander **G-BJEC** arr 12:46 dep 13:55, Legacy 650 **D-AZUR** arr 17:42 fr Nice n/stop, phenom 300 CS-PHF arr 18:02 fr Cannes n/stop, Cessna 550 Bravo **F-HBMR** arr 18:30 fr Le Bourget dep 19:15 to Pisa,



9H-VJN Global 6000 Vista Jet 29/05 Stewart Robertshaw

## Tuesday 30<sup>th</sup> May

Legacy 650 D-AZUR dep 07:58 to Olbia, Phenom 300 CS-PHF dep 09:11 to Firenze, Grumman AA5b Tiger G-BTII arr 09:26 fr Church Fenton n/stop, Grob G115E Tutor G-BYXT ILS approach at 09:58 c/s UAQ13 fr Leeming, Gulfstream 5 N1967J arr 10 :51 fr Fort Worth n/stop, Cessna 560 Excel CS-DXQ arr 11:44 fr Bari ret at 17:38, Global 6000 CS-GLH arr 12:24 fr Ibiza n/stop, Hawker 400XP SP-=EAK arr 14:29 fr Albert-Bray, dep 16:13 to Faro, Aero Commander AC114B G-HPSL f/t Bagby (19:28/19:58), Beech 350 Shadow ZZ419 2x Touch and goes at 20:11 fr Waddington, Phenom 300 CS-PHJ arr 20:18 fr Faro n/stop



Illustration 1: N1967J Gulfstream 5 30/05 Mike Storey

## Wednesday 31<sup>st</sup> May

Phenom 300 CS-PHJ dep 09:23 to Zurich, Phenom 300 D-CMMP arr 11:25 fr Geneva n/stop, Cessna 525A CJ2 D-IFRT arr 15:39 fr Rotterdam dep 17:02 to Pisa, Beech 76 Duchess G-DANL ILS approach fr Sherburn at 16:55, Cirrus SR22 N781CD Dep 17:51 to Church Fenton, Praetor 600 D-BALL arr 19:13 fr Palma n.stop, Global 7500 **9H-VII** arr 22:30 fr Dulles n/stop





# LBA Airline movements.... Andy Coverdale

## May 2023

Another month and into May. And we can see the full month of charter flights now arriving. TUI are back, but have increased their presence to five weekly flights. BHAir have returned with their weekly flight, and Aurigny are also back with a twice weekly flight. And back after quite a few years absence Freebird have started operating twice weekly flights to two destinations. And Ryanair have a large number of destinations using non-based aircraft. So this probably represents the best variety at LBA for some years, possibly to the days of when we still had Monarch etc. So lets hope we continue to see LBA build on this, there are already talks of other new charter airlines booking slots for 2024, so hopefully good use will be made of the existing daytime slots so the reduction in night time slots (to comply with night time noise limits etc) does not restrict this growth.

### **Aurigny(AUR/GR, "Ayline")**

The company operates a service from Guernsey using ATR aircraft.

**Guernsey**(664/665, "66V/66W", Wed/Sat):-24/5 G-ORAI, 27/5 G-ORAI, 31/5 G-OGFC.



G-ORAI ATR72 Aurigny 24/5 From Facebook



G-EZDJ Airbus A319 Easyjet Jack Sage from Facebook

### **BHAir(BGH "Balkan Holidays")**

Balkan operate a once a week charter from/to Burgas using A320 aircraft.

**Burgas**(5569/5570, "5569/5570" Sat):-27/5 LZ-LAC.

### easyJet(EZY/U2, “Easy”)

easyJet operate on the Belfast International route using a mix of A319/A320 and the newer A320N aircraft.

**Belfast**(047/048, “476K/725E”, Mon/Fri):-1/5 G-EZDM, 5/5 G-EZDM, 8/5 G-EZDJ, 12/5 G-EZDJ, 15/5 G-EZDR, 19/5 G-EZDR, 22/5 G-EZDJ, 26/5 G-UZHE, 29/5 G-EZDJ.

**Belfast**(049/050, “358L/678J”, Sun/Tue):-2/5 G-UZHP, 7/5 G-EZDJ, 9/5 G-UZHJ, 14/5 G-EZDJ, 16/5 G-EZDR, 21/5 G-EZDR, 23/5 G-EZOP, 28/5 G-EZTA, 30/5 G-EZDX.

### Emerald Airlines(EAI/EA, “Gemstone”) & Emerald Airlines UK(EAG/EI, “Greenstone”)

Emerald operates to Belfast City and Dublin, operating five return flights per day most days by the end of May, using ATR72 aircraft. The Dublin route is allocated to Emerald and the Belfast route to Emerald UK, although there do appear to be occasional instances of the other operators aircraft being used. And over Summer, there will be some leased in Scandinavian ATRs.

**Dublin**(3390/3391, “35ZB/91NM”, Daily):-1/5 EI-HDK, 2/5 EI-FAT, 3/5 EI-HDH, 5/5 EI-FAV, 6/5 EI-FAV, 7/5 EI-HDI, 8/5 EI-HDH, 9/5 EI-HDH, 10/5 EI-GPO, 11/5 EI-GPP, 12/5 EI-HDI, 13/5 EI-HDI, 14/5 EI-HDK, 15/5 EI-GPN, 16/5 EI-FAT, 17/5 EI-GPO, 18/5 EI-GPO, 19/5 EI-HDH, 20/5 EI-HDH, 21/5 EI-FSL, 22/5 EI-HDK, 23/5 EI-GZV, 24/5 EI-GZV, 25/5 EI-GPP, 26/5 EI-HDI, 27/5 EI-HDI, 28/5 EI-FSL, 29/5 EI-HDH, 30/5 EI-GZV, 31/5 EI-GPO.

**Dublin**(3392/3393, “92RP/93BP”, Sunday):-7/5 EI-HDI, 14/5 EI-HDK, 21/5 EI-FSL, 28/5 EI-FSL.

**Dublin**(3394/395, “94LB/95NA”, Various):-1/5 OY-RUV, 2/5 OY-RUV, 3/5 OY-RUV, 4/5 OY-RUV, 5/5 OY-RUV, 7/5 OY-RUV, 8/5 OY-RUV, 9/5 OY-RUV, 10/5 OY-RUV, 11/5 OY-RUV, 12/5 OY-RUV, 14/5 SE-MDC, 15/5 SE-MDC, 16/5 EI-FSL, 17/5 EI-FSL, 18/5 EI-GPN, 19/5 EI-HDK, 21/5 EI-GPN, 22/5 EI-GPN, 23/5 EI-HDH, 24/5 EI-FAT, 25/5 EI-HDK(3394) HI-HDH(3395), 26/5 EI-GPN, 28/5 EI-GPN, 29/5 EI-HDH, 30/5 EI-HDK, 31/5 EI-HDH.

**Belfast City**(3670/3671, “7LN/71LD”, Daily):-1/5 G-CMJN(3680) G-CMJM(3671), 2/5 EI-FSL, 3/5 EI-FSL, 4/5 G-CMJM, 5/5 EI-FSL, 6/5 G-CMMK, 7/5 G-CMJL, 8/5 G-CMJN, 9/5 G-CMMK, 10/5 EI-FAT, 11/5 G-CMJN, 12/5 G-CMJL, 13/5 G-CMJJ, 14/5 G-CMJL, 15/5 G-CMJN(3670), 16/5 G-CMMN, 17/5 EI-GZV, 18/5 EI-GZV, 19/5 G-CMJL, 20/5 G-CMJJ, 21/5 G-CMJL, 22/5 G-CMJN, 23/5 G-CMMN, 24/5 G-CMJJ, 25/5 G-CMJM, 26/5 G-CMJL, 27/5 G-CMJJ, 28/5 G-CMJL, 29/5 G-CMMN, 30/5 G-CMMK, 31/5 G-CMJJ.

**Belfast City**(3676/3677, “76LG/77LD”, Daily):-2/5 G-CMJL, 3/5 G-CMJN, 4/5 G-CMJL, 5/5 G-CMJN, 6/5 G-CMJM, 7/5 EI-FAT, 8/5 EI-GZV, 9/5 G-CMJL, 10/5 EI-GZV, 11/5 G-CMJL, 12/5 G-CMMK, 13/5 G-CMJN, 14/5 EI-FAT, 15/5 G-CMJL, 16/5 G-CMJL, 17/5 G-CMJN, 18/5 G-CMJJ, 19/5 G-CMJN, 20/5 G-CMJN, 21/5 G-CMJN, 22/5 G-CMJN, 23/5 G-CMMN, 24/5 G-CMMK, 25/5 G-CMJN, 26/5 G-CMJN, 27/5 G-CMJL, 28/5 G-CMMK, 29/5 G-CMJM, 30/5 G-CMJL, 31/5 G-CMMK.

**Belfast City**(3678/3679, “78XT/79PW”, Daily except Saturday):-1/5 G-CMJM, 2/5 EI-FSL, 3/5 EI-FSL, 4/5 G-CMJM, 5/5 EI-FSL, 7/5 G-CMJL, 8/5 G-CMJN, 9/5 G-CMMK, 10/5 G-CMJN, 11/5 G-CMJN, 12/5 G-CMJN, 15/5 G-CMJN, 16/5 G-CMMN, 18/5 EI-GZV, 19/5 G-CMJL, 21/5 G-CMJL, 22/5 G-CMJN, 23/5 G-CMJN, 24/5 EI-FAT, 25/5 G-CMJM, 28/5 G-CMJL, 29/5 G-CMMN, 30/5 G-CMMK, 31/5 G-CMJJ.

**Other flights**:-15/5 G-CMJJ(401P) positioned out to Belfast.

### Freebird(FHY/FH, “Freebird”)

For the Summer of 2023, they will operate twice weekly charters flight from/to Antalya and Dalaman, using A320 aircraft.

**Antalya**(515/516, “525/526”, Sun/Wed):-24/5 TC-FHM, 28/5 TC-FHG, 31/5 TC-FHG.

**Dalaman**(621/622, “621/622”, Sun/Wed):-24/5 TC-FHL, 28/5 TC-FHL, 31/5 TC-FHL.



TC-FHM Airbus A320 Freebird 24/05 Paul Whincup

**Jet2(EXS/LS, "Channex")**

Only positioning /test/training flights shown:-3/5 G-JZBB(048A) positioned out to Glasgow, 4/5 G-DRTP(051B) positioned in from Edinburgh, 5/5 G-GDFG(059B) training flight, G-DRTP(049A) positioned out to Stansted, G-DRTD(047A) positioned in from Manchester, G-JZHP(048A) positioned in from Stansted, 6/5 G-JZHH(042A) positioned out to Bristol, G-SUNB (A321) (059B/058B) positioned in from/out to Manchester, G-JZHH(045A) positioned in from Bristol, 8/5 G-GDFM(050B) positioned out to Dublin, 9/5 G-JZBG(071W) positioned out to Belfast, G-JZBU(030F/045D) training flight then positioned out to East Midlands, 10/5 G-JZHG(041A/042A) positioned out to/in from Edinburgh, G-DRTG(031R) positioned in from Manchester, 14/5 G-JZHJ(079W) positioned in from Manchester, 15/5 G-JZHN(049A/048A) positioned out to/in from Alicante, 16/5 G-GDFO(035E) positioned out to Dublin, G-DRTO(043K) positioned in from Norwich, 17/5 G-GDFL(050B) training flight, 18/5 G-GDFL(050B) training flight, G-JZHU(001C) positioned out to Cardiff, G-GDFK(051B) training flight, G-GDFO(035E) positioned in from Dublin, G-JZHU(002C) positioned in from Edinburgh, 19/5 G-JZBU(050B) positioned in from East Midlands, 20/5 G-JZBO(466) positioned in from Larnaca, 21/5 G-GDFS(031R) positioned out to Edinburgh, 22/5 G-JZBU(050B) training flight, 23/5 G-JZBU(050B) training flight, G-DRTM(030K) positioned in from Shannon, 24/5 G-JZBI(049A) positioned out to Belfast, G-JZBU(051B) training flight, G-JZHU(061J) positioned out to Bristol, 29/5 G-JZBJ(041A) positioned out to Manchester, 30/5 G-JZBJ(042A) positioned in from Manchester.



G-SUNB Airbus A321N Jet2.com 06/05 Paul Whincup

### KLM(KLM/KL, "KLM")

Three flights most days from/to **Amsterdam** using Embraer 170/190/195 aircraft, one flight stopping overnight. B737s making appearances on a regular basis on some services.

**Amsterdam**(1541/1542, "97A/1542", Various):-1/5 PH-EZW, 2/5 PH-EZS, 4/5 PH-EXA, 5/5 PH-EXE, 7/5 PH-EXS, 8/5 PH-EXW, 9/5 PH-EZA, 10/5 PH-EZE, 12/5 PH-EXV, 13/5 PH-EZZ, 16/5 PH-EZL, 17/5 PH-EXS, 18/5 PH-EZT, 19/5 PH-EXF, 20/5 PH-EZX, 21/5 PH-EZZ, 22/5 PH-EXC, 24/5 PH-EZG, 25/5 PH-EZO, 26/5 PH-EXV, 27/5 PH-EZX, 28/5 PH-EZP, 29/5 PH-EXO, 30/5 PH-EZN.

**Amsterdam**(1549/1550, "73E/74F", Sun/Mon/Tue/Wed/Thu/Fri):-2/5 PH-EZC, 3/5 PH-EZZ, 5/5 PH-EZC, 6/5 PH-EZY, 7/5 PH-EZS, 8/5 PH-EZM, 10/5 PH-NXO, 11/5 PH-EXC, 13/5 PH-EZE, 14/5 PH-EZP, 15/5 PH-EZD, 16/5 PH-EXO, 17/5 PH-EXY, 18/5 PH-EZP, 19/5 PH-EXA, 21/5 PH-EZP, 22/5 PH-EZM, 23/5 PH-EZZ, 24/5 PH-EZH, 25/5 PH-EXY, 26/5 PH-EZO, 27/5 PH-EZL, 30/5 PH-EXG, 31/5 PH-EXV.

**Amsterdam**(1551/1540 overnight stop, "31F/78E", Daily):-1/5 PH-EXV, 3/5 PH-EZA, 4/5 PH-EZF, 5/5 PH-EZP, 7/5 PH-EXE, 8/5 PH-EZE, 9/5 PH-EZO, 11/5 PH-EXV, 12/5 PH-EZD, 13/5 PH-EXF, 14/5 PH-EZM, 15/5 PH-EZL, 16/5 PH-EZT, 17/5 PH-EZT, 19/5 PH-EXP, 20/5 PH-EZE, 21/5 PH-EXV, 22/5 PH-EZZ, 23/5 PH-EZA, 24/5 PH-EZR, 25/5 PH-EXC, 27/5 PH-EXY, 28/5 PH-EZV, 29/5 PH-EZC, 30/5 PH-EXK, 31/5 PH-EXK.

### Ryanair(RYR/FR, "Ryanair")

Ryanair base 3 aircraft operating routes to:-**Alicante**(9078/9079, "63RX/61KC", Tue/Fri),

**Alicante**(9089/9088, "79QX/15LY", Mon), **Bratislava**(5041/5042, "42VD/296B", Sat),

**Dublin**(153/152, "4J/1NR", Mon/Sat), **Dublin**(157/156, "5TC/2RX", Fri/Sat), **Dublin**(456/457,

"2CP/31HH", Tue/Wed/Sat), **Faro**(2503/2504, "79SJ/5GL", Tue), **Fuerteventura**(475/474,

"9E/17EX", Mon/Thu), **Ibiza**(2486/2487, "36AR/17ZP", Tue), **Krakow**(2332/2333,

"55UT/91LW", Tue/Sat), **Lanzarote**(2048/2047, "5PV/1HX", Sun/Thu), **Malaga**(2446/2447,

"44HJ/51MF", Fri), **Palma**(230/2311, "5RH/8AA", Sun/Mon/Wed/Thu/Fri/Sat),

**Palma**(2326/2327, "55RZ/827T", Wed/Sat), **Perpignan**(9359/9360, "37SQ/447D", Sun/Thu),

**Poznan**(5606/5607, "3JJ/56UV", Mon), **Tenerife**(2492/2493, "710D/74FP", Sun/Wed),

**Warsaw**(1933/1932, "4TY/46XW" Wed/Fri).

All flights (based/non-based) operated by B737 aircraft.

**Based Aircraft**:- EI-EVE(1/5), EI-IGK(1/5-4/5), EI-EGA(1/5-11/5), EI-EGK(4/5-6/5), EI-HAW(6/5-7/5), EI-ESV(6/5-9/5), EI-HGE(9/5-16/5), EI-DWJ(11/5-16/5), EI-IFR(16/5-30/5), EI-EFC(16/5-20/5), EI-ENE(21/5-26/5), EI-EBP(26/5-31/5), EI-IGI(30/5-31/5).

**Non-based Aircraft** flights

**Alicante**(9078/9079, "9078/4BR", Sun/Mon/Wed/Thu/Sat):-1/5 EI-HEZ, 3/5 EI-IFW, 4/5 EI-GJS, 5/5 EI-GJS, 7/5 EI-HEZ, 8/5 EI-HMX, 10/5 EI-HAW, 11/5 EI-DHO, 13/5 EI-HAX, 14/5 EI-HAW, 15/5 EI-HGW, 17/5 EI-IFT, 18/5 EI-IFT, 20/5 EI-HGW, 21/5 EI-HAX, 22/5 EI-IFT, 24/5 EI-HGH, 25/5 EI-IFP, 27/5 EI-HGW, 28/5 EI-IFW, 29/5 EI-HMY, 31/5 EI-IHG.

**Alicante**(9088/9089, "15LY/79QX", Wed/Sat):-3/5 EI-HMX, 10/5 EI-HAX, 13/5 EI-DCP, 17/5 EI-IFW, 20/5 EI-EKK, 24/5 EI-HGW, 27/5 EI-DHH, 31/5 EI-HMY.

**Bratislava**(5042/5041, "206B/42VD", Wed):-3/5 SP-RSV, 10/5 SP-RKG, 17/5 SP-RSL, 24/5 SP-RKX, 31/5 SP-RKX.

**Dublin**(457/456, "31HH/2CP", various):-2/5 EI-IGV, 23/5 EI-DYA.

**Dublin**(152/153, "1NR/4J", Sun/Tue/Wed/Thu/Fri):-2/5 EI-EVK, 3/5 EI-DYE, 4/5 EI-IFR, 5/5 EI-DHF, 6/5 EI-HAW, 7/5 EI-EKY, 9/5 EI-DHF, 10/5 EI-EVL, 11/5 EI-IFR, 12/5 EI-DPF, 14/5 EI-DWX, 16/5 EI-EVJ, 17/5 EI-GJT, 18/5 EI-HEN, 19/5 EI-EFF, 21/5 EI-EMR, 23/5 EI-EMA, 24/5 EI-GSI, 25/5 EI-DWT, 26/5 EI-DCL, 28/5 EI-EBF, 30/5 EI-ENG, 31/5 EI-EBF.

**Dublin**(156/157, "2FX/5TC", Sun/Mon/Tue/Wed/Thu):-2/5 EI-HMS, 3/5 EI-EGD, 4/5 EI-EVH, 7/5 EI-HGE, 8/5 EI-HMS, 9/5 EI-IFP, 10/5 EI-EKV, 11/5 EI-EMJ, 14/5 EI-HEZ, 15/5 EI-HAY, 16/5 EI-HGP, 17/5 EI-EFC, 18/5 EI-DLD, 21/5 EI-IGX, 22/5 EI-HMS, 23/5 EI-HMX, 24/5 9H-QCF, 25/5 EI-EKI, 28/5 EI-ENG, 29/5 EI-IHI, 30/5 EI-HGP, 31/5 EI-EBD.



### EI-IFR Boeing 737-8MAX Tyanair 31/05 Stewart Robertshaw

**Faro**(2504/2503, "5GL/79SJ", Thu/Sat):-4/5 EI-DYY, 6/5 EI-EFC, 11/5 EI-EFI, 13/5 EI-EFI, 18/5 EI-GXH, 20/5 EI-DPJ, 25/5 EI-DPJ, 27/5 EI-DWW.

**Gdansk**(1504/1503, "60ZK/7BA", Sun/Tue/Wed):-2/5 SP-RSI, 3/5 SP-RKW, 7/5 SP-RKW, 9/5 SP-RKL, 10/5 SP-RKW, 14/5 SP-RNA, 16/5 SP-RKL, 17/5 SP-RSN, 21/5 SP-RKQ, 23/5 SP-RKI, 24/5 SP-RSA, 28/5 SP-RSX, 30/5 SP-RKL, 31/5 SP-RKP.

**Ibiza**(2487/2486, "17ZP/36AR", Sat):-6/5 EI-ENH, 13/5 EI-EKG, 20/5 EI-EVX, 27/5 EI-EMD.

**Krakow**(2333/2332, "8BA/96YF", Wed/Fri):-3/5 SP-RZC, 5/5 SP-RZO, 10/5 SP-RZD, 12/5 SP-RZG, 17/5 SP-RZD, 19/5 SP-RKD, 24/5 SP-RZO, 26/5 SP-RZO, 31/5 SP-RZC.

**Malaga**(2447/2446, "51MF/44HJ", Mon/Tue/Thu/Sat):-2/5 EI-DHC, 4/5 EI-IFZ, 6/5 EI-DPG, 8/5 EI-HGN, 9/5 EI-EMR, 11/5 EI-HGN, 13/5 EI-DPZ, 15/5 EI-IFZ, 16/5 EI-DPZ, 18/5 EI-IGZ, 20/5 EI-EVA, 22/5 EI-DPZ, 23/5 EI-DWV, 25/5 EI-HGE, 27/5 EI-GXN, 29/5 EI-IGZ, 30/5 EI-GXN.

**Palma**(2311/2310, "8AA/5RH", Tue):-2/5 EI-EKG, 9/5 EI-DPI, 16/5 EI-EBL, 23/5 EI-DLW, 30/5 EI-EBW.

**Palma**(2327/2326, "827T/55RZ", Fri):-5/5 EI-DLW, 12/5 EI-DCX, 19/5 EI-DLW, 26/5 EI-DWG.

**Porto**(2400/2399, "90NG/2399", Sun/Thu):-4/5 EI-EBE, 7/5 EI-HGM, 11/5 EI-GJS, 14/5 EI-IGL, 18/5 EI-GJS, 21/5 EI-IGL, 25/5 EI-GXM, 28/5 EI-HEW.

**Poznan**(5607/5606, "56UV/3JJ", Fri):- 5/5 SP-RSZ, 12/5 SP-RSY, 19/5 SP-RKB, 26/5 SP-RSG.

**Warsaw**(1932/1933, "749M/1933", Tue):-2/5 SP-RSK, 9/5 SP-RKO, 16/5 SP-RSP, 23/5 SP-RSP, 30/5 SP-RSP.

**Wroclaw**(4108/4107, "6RT/4G", Wed/Sat):-3/5 SP-RKD, 6/5 SP-RSO, 10/5 SP-RSQ, 13/5 SP-RKM, 17/5 SP-RKQ, 20/5 SP-RKY, 24/5 SP-RSU, 27/5 SP-RSB, 31/5 SP-RKC.

**Other flights**:-6/5 EI-HMX(907/9079) positioned in from Liverpool then departed to Alicante.



### EI-IGK Boeing 737-8200 MAX Ryanair 01/05 Mike Storey

### TUI(TOM/BY, “TUI Air”)

Five weekly charter flights are being operated from May using B737 aircraft.

**Corfu**(3551/3550, “23C/3DA”, Fri):-5/5 G-TAWL, 12/5 G-TAWC, 19/5 G-TAWK, 26/5 G-TAWM.

**Dubrovnik**(3451/3450, “2CA/7WG”, Thu):-4/5 G-TUMW, 11/5 G-FDZY, 18/5 G-FDZY, 25/5 G-FDZY.

**Palma**(3251/3250, “65D/85K”, Tue):-2/5 G-TAWZ, 9/5 G-TAWM, 16/5 G-FDZX, 23/5 G-FDZX, 30/5 G-TAWS.

**Palma**(3359/3358, “4DY/54G”, Wed):-24/5 G-FDZX, 31/5 G-TAWC.

**Palma**(3619/3618, “70N/7KN”, Sat):-6/5 G-TAWN, 13/5 G-TAWG, 20/5 G-TAWN, 27/5 G-TAWS.

### Wizz Air(WZZ/W6, “Wizz Air”) & Wizz Air Malta (WMT/W4, “Wizz Air Malta”)

Charter flights operate in/out of LBA using A320/321 aircraft

**Bucharest**(3015/3016, “77/54”, Sun/Mon/Wed/Sat):-1/5 HA-LWZ, 3/5 HA-LXZ, 6/5 9H-WZR, 8/5 9H-WAO, 10/5 9H-WBN, 13/5 9H-WBO, 15/5 HA-LXZ, 17/5 9H-WAT, 20/5 9H-WBO, 22/5 9H-WBU, 24/5 9H-WAW, 27/5 9H-WZS, 29/5 9H-WAW, 31/5 9H-WBN.

**Cluj**(3313/3314, “138/8RU”, Mon/Fri):-1/5 9H-WDA, 5/5 9H-WZT, 8/5 9H-WZS, 12/5 9H-WDA, 15/5 9H-WDA, 19/5 9H-WZT, 22/5 HA-LYK, 26/5 HA-LPL, 29/5 HA-LYK.

**Gdansk**(1615/1616, “2205/34EZ”, Tue/Thu/Sat):-2/5 HA-LTA, 4/5 HA-LXL, 6/5 HA-LXL, 9/5 HA-LXN, 11/5 HA-LXP, 13/5 HA-LXK, 16/5 HA-LXA, 18/5 HA-LXK, 20/5 HA-LVE, 23/5 HA-LXO, 25/5 HA-LVT, 27/5 HA-LXL, 30/5 HA-LXP.

**Katowice**(1015/1016, “2MQ/62UG”, Mon/Wed/Fri):-1/5 9H-WAO, 3/5 HA-LZK, 5/5 9H-WAO, 8/5 HA-LVH, 10/5 HA-LXJ, 12/5 HA-LVH, 15/5 HA-LZK, 17/5 HA-LZU, 19/5 HA-LZK, 22/5 HA-LZU, 24/5 HA-LXD, 26/5 HA-LVI, 29/5 HA-LXA, 31/5 9H-WAO.

**Krakow**(5013/5014, “0718/5823”, Mon/Fri):-1/5 HA-LXM, 5/5 HA-LXK, 8/5 HA-LXA, 12/5 HA-LZR, 15/5 HA-LVD, 19/5 HA-LXL, 22/5 HA-LXA, 26/5 HA-LXA, 29/5 HA-LXM.

**Warsaw**(1315/1316, “409U/49ZD”, Wed/Sat):-3/5 9H-WBU, 6/5 9H-WDI, 10/5 HA-LXC, 13/5 HA-LVO, 17/5 HA-LVC, 20/5 9H-WBI, 24/5 HA-LXE, 27/5 HA-LZK, 31/5 HA-LVG.

**Wroclaw**(1815/1816, “5183/9550”, Tue/Sat):-2/5 HA-LZP, 6/5 HA-LTC, 9/5 HA-LXB, 13/5 HA-LXB, 16/5 HA-LTD, 20/5 HA-LXB, 23/5 HA-LXB, 27/5 HA-LTD, 30/5 HA-LXG.



HA-LZU Airbus A321N 30/05 Jack Sage from Facebook

|                     | Apr-22    | Apr-23    | % This month | % +/-   |
|---------------------|-----------|-----------|--------------|---------|
| <b>Movements</b>    |           |           |              |         |
| Total               | 2,683     | 2,825     |              | 5.29%   |
| <b>Passengers</b>   |           |           |              |         |
| Scheduled           | 251,780   | 304,243   | 99.89%       | 20.84%  |
| Charter             | 0         | 345       | 0.11%        | #DIV/0! |
| Transit             | 0         | 0         | 0.00%        | N/A     |
| TOTAL               | 251,780   | 304,588   |              | 20.97%  |
| International       | 248,445   | 290,419   | 95.35%       | 16.89%  |
| Domestic            | 3,335     | 14,169    | 4.65%        | 324.86% |
| MOVING ANNUAL TOTAL | 1,317,164 | 3,606,166 |              | 173.78% |

Compared to April 2019, Movements were 100% and Passenger numbers are at 95.7%.

Reference: CAA Statistics website

Produced by Alan Sinfield

## Society contacts....

**Chairman** Howard Griffin  
6 Acre Fold, Addingham, Ilkley LS29 0TH  
01943 839126, 07946 506451  
[howard.griffin@airyorkshire.org.uk](mailto:howard.griffin@airyorkshire.org.uk)

**Secretary** Jim Stanfield  
8 Westbrook Close, Leeds, LS18 5RQ  
0113 258 9968 [jim.stanfield@airyorkshire.org.uk](mailto:jim.stanfield@airyorkshire.org.uk)

**Distribution/Membership** Pauline Valentine  
8 St Margaret's Avenue, Horsforth, Leeds, LS18 5RY  
0113 228 8143

**Treasurer** Paul Armitage  
58 Eaton Hill, Leeds, LS16 6SE  
07970 260417 [paul.armitage@airyorkshire.org.uk](mailto:paul.armitage@airyorkshire.org.uk)

**Dinner Organiser** Alan Sinfield  
6 The Stray, Bradford, BD10 8TL  
01274 014185 [alan.sinfield@airyorkshire.org.uk](mailto:alan.sinfield@airyorkshire.org.uk)

**Managing Editor** Howard Griffin  
and Scott Mahoney, Keith Manning and Mark Elliott

**Meetings/Visits** Ian Gratton  
[photos@airyorkshire.org.uk](mailto:photos@airyorkshire.org.uk)

**Photographic Editor** Plus Paul Windsor (Reception/Registration), Keith Manning, Scott Mahoney & Paula Denby

**Code of Conduct** Members should not commit any act which would bring the Society into disrepute in any way.

**Disclaimer** The views expressed in articles in the magazine are not necessarily those of the editor & the committee.

**Copyright** The photographs & articles in this magazine may not be reproduced in any form without the permission of the Editor/Photograph owner.



Inside the terminal building in 1993/4-ish. It is the Horizon Buffet on the first floor. This was a landside café open to the public. It was a delightful spot on a Saturday morning for a quiet chat over coffee and pastry with the occasional air traffic movement. The nearby airport car



G-RASC Evans VP-2 Volksplane. A visitor from Yearby Airstrip, N. Yorks to the Aero Club Fly-in on Sat 29 June 1991. The VP-2 is developed from the VP-1 to accommodate two passengers side-by-side. It was written-off in July 1995 when attempting to take-off at Bagby. After lengthy repair it returned to the register ten years later.